



## Aspen Wood Firebox

---





# Aspen Wood Firebox

The 60" Wood Firebox is a powerhouse of design and performance, offering the largest UL-certified wood-burning fireplace on the market. With a 60" wide by 38" high opening, it delivers an exceptional flame presence while maintaining a clean, seamless design. Featuring a hidden air control and no visible smoke shelf, this firebox ensures efficient combustion. The liner extends fully with no exposed metal, allowing you to customize the interior with firebrick, soapstone, or our smooth concrete panels.

Designed for versatility and easy installation, it can be installed on a wood floor and includes attic insulation shields for added safety. Elevate your home with the unmatched beauty and performance of the 60" Wood Firebox—where design meets functionality.

*On cover: WB60LFB0F Linear Firebox with smooth black liner, shown with flame-resistant fiberglass hearth mat*  
*This Page: WB60FB0F Traditional Firebox with soapstone firebrick*



## Options and Accessories

Firebrick is available in 3 different color options.

*Soapstone*



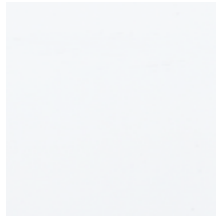
*Buff*



*Red*



Liners are available in 4 different color options.



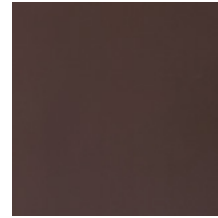
*White*



*Concrete*



*Black*



*Mocha*

*This Page: WB60LFB0F Firebox with smooth black liner*

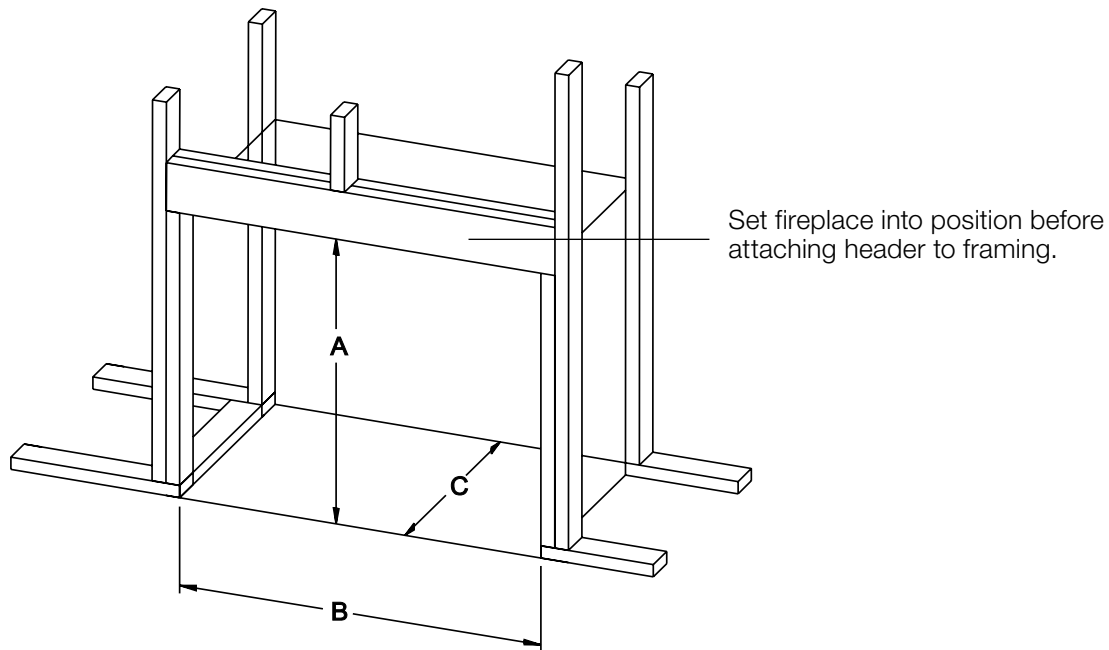


# Framing Dimensions

	WB60FB0F	WB60LFB0F
A	76 <sup>3</sup> / <sub>4</sub>	64 <sup>1</sup> / <sub>8</sub>
B	75 <sup>3</sup> / <sub>8</sub>	75 <sup>3</sup> / <sub>8</sub>
C	30 <sup>1</sup> / <sub>2</sub>	30 <sup>1</sup> / <sub>2</sub>

Measurements given in inches.

\*Dimensions may vary based on install. See manual.



Limited Lifetime Parts Warranty With A Five - Year Limited Labor Warranty – Combustion Chamber  
 Limited Ten - Year Parts Warranty – Venting  
 Limited One - Year Parts Warranty – Accessories and Parts

Empire is committed to continuous product improvement; specifications are subject to change without notice. Dimensions in this brochure are approximate; read and follow the framing dimensions in the owners manual supplied with your Empire product.

918 Freeburg Ave.  
 Belleville, IL 62220-2623  
 e-mail: info@empirecomfort.com

WMH-010143 2/26/25

