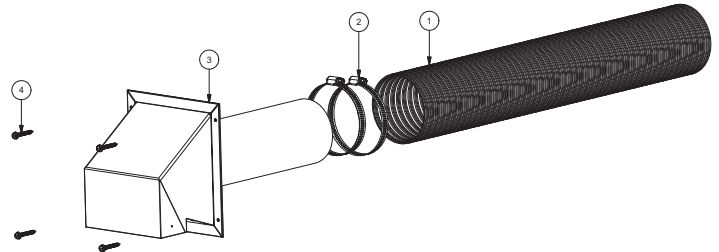


UNITED STATES STOVE CO[®]

EST^d 1869

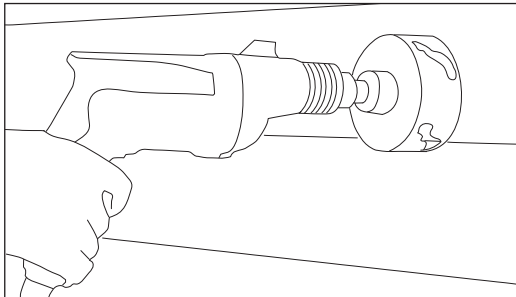
4FAK INSTRUCTION SHEET

Key	Part #	Description	Qty
1	892182	Flexible Air Duct	1
2	83967	3.6" to 4.5" Hose Clamp	2
3	892181	Fresh Air Intake	1
4	83690	#10AX1-1/2 HX W SM SCR	4

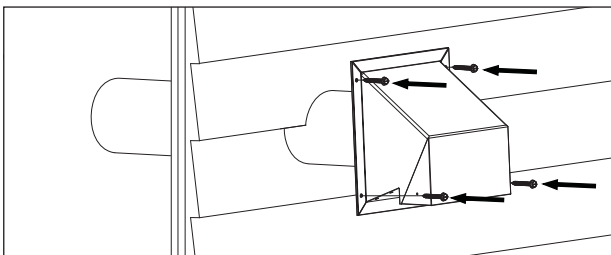


Installation of a fresh air kit is required when installing this stove inside a mobile home (see Owner's Manual). Installation must adhere to all local codes. If after reading these instructions you have any doubt about your ability to complete the installation properly, you must obtain the services of a licensed heating and cooling contractor or certified stove installer.

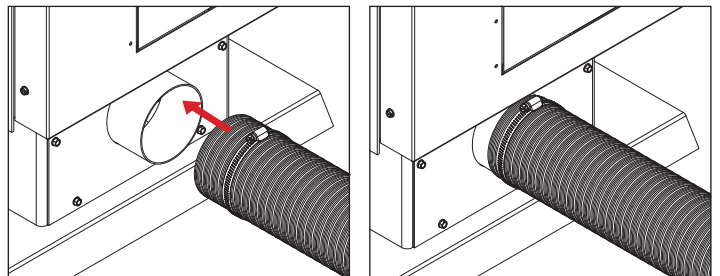
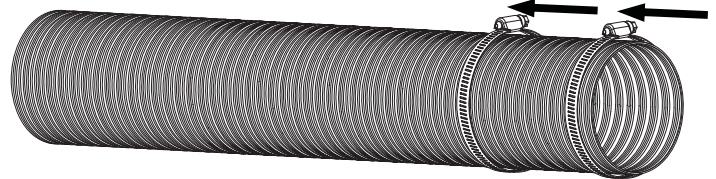
1. With the stove in the operating position, mark and drill a 5" hole through the wall at the desired point of entry. The point of entry should be at or below the level of the intake air tube on the stove.



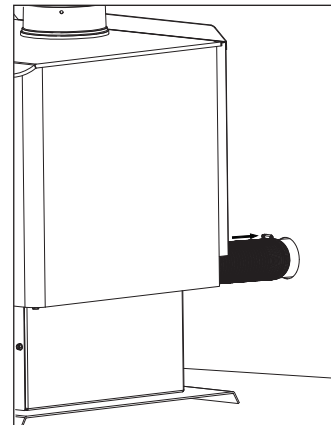
2. Slide the tail portion of the weather hood through the hole. Secure the weather hood with the provided screws at each of the four corners. Caulk around the edges of the hood and screws to seal. This task should be done after the stove has been installed and the exhaust piping routed. Try to position the hole for the air intake as near as possible to the stove.



3. Slide both hose clamps over the aluminium flex pipe. Then slide the flex pipe over the air intake tube of the stove. Next tighten the hose clamp over the end of the aluminium flex hose.



4. Route the flex pipe to the through wall connection and slide the flex pipe over the tail piece. Apply the second hose clamp over the tail piece and tighten.



IN ORDER TO MAINTAIN WARRANTY, COMPONENTS MUST BE REPLACED USING ORIGINAL MANUFACTURERS PARTS PURCHASED THROUGH YOUR DEALER OR DIRECTLY FROM THE APPLIANCE MANUFACTURER. USE OF THIRD PARTY COMPONENTS WILL VOID THE WARRANTY.

852908C