

## Metalbest® Chimney System (MCS)

The rugged all-fuel chimney designed for maximum safety and performance!

**METALBEST**  
CHIMNEY & VENTING SYSTEMS

### We Stand Behind Our Products.

Backing our commitment to quality, Metalbest All-Fuel Chimney Systems carry the "Smart Choice" Limited Lifetime Warranty. All system components (not just the insulated lengths) are warranted against defects in material and workmanship for the life of the product.

An impeccable safety record, along with unsurpassed durability, design and materials, all give us the confidence to offer a warranty this comprehensive and unmatched by anyone else in the industry.

For over 85 years we have been the industry's chimney innovator, using the highest in design standards to develop the safest products.

### Safety

Our All-Fuel Chimney is listed to Underwriters Laboratories Safety Standard for Factory-Built Chimneys (UL-103).

#### ULTRA-TEMP® HT GALVA-TEMP® HT

Diameter Sizes: 5", 6", 7" & 8"  
Part Identification: Letter UT and GT  
Clearances: 2" of Airspace to Combustibles  
Temperature Ratings: 2100°F (Maximum Test 10 min.)  
1400°F (Maximum for 60 min.)  
1000°F (Maximum Continuous Operating Temperatures)



#### ULTRA-TEMP® GALVA-TEMP®

Diameter Sizes: 10", 12", 14", 16", 18", 20", 22" & 24"  
Part Identification: Letter U and G  
Clearances: 2" of Airspace to Combustibles  
Temperature Ratings: 1700°F (Maximum Test 10 min.)  
1400°F (Maximum for 60 min.)  
1000°F (Maximum Continuous Operating Temperatures)



Ultra-Temp® - All-Stainless Steel  
Galva-Temp® - Galvanized Exterior

- 5"-8" Type HT All-Fuel Chimney listed to UL103HT
- 304 Stainless Steel inner liner
- Choice of Stainless Steel or Galvanized Steel outer casing
- 1" Solid Pack Insulation - Our proprietary Solid Pack Insulation helps maintain higher flue gas temperatures for superior drafting performance and lower outside temperatures for safety. Independent testing by Omni Labs shows Ultra-Temp Chimney is the coolest under the hottest conditions.\*

• Twist-Lock Coupler w/Locking Band included at no extra charge

• Hard Tooled supports and accessories for the perfect fit every time

• "Smart Choice" Lifetime Warranty



Professional installation qualifies for extended coverage - see warranty for details.

\*UL103HT Chimney independently tested by Omni-Test Laboratories, Inc.

## Get the Selkirk® Advantage...

The tradition continues... Selkirk is the original innovator of prefabricated Venting systems - and we continue to move forward. Count on Selkirk, the world's most recognizable name in Chimney & Venting, for the widest range of high-performance products to meet your needs.

**Selkirk Corporation**  
1301 W. President George Bush Hwy,  
Suite 330  
Richardson, Texas 75080-1139  
1.800.992.VENT (8368)  
Toll Free Fax: 1.877.393.4145

**Selkirk Canada Corporation**  
375 Green Road  
Stoney Creek, Ontario  
Canada L8E 4A5  
1.888.SELKIRK (735.5475)  
Toll Free Fax: 1.866.835.9624



www.selkirkcorp.com

MBAFCBG 7/09



Reduce, Reuse, Recycle  
Our literature is printed on  
recyclable paper

**METALBEST**  
CHIMNEY & VENTING SYSTEMS

## All-Fuel Chimney Buyers Guide



Ultra-Temp®  
All-Stainless Steel

Galva-Temp®  
Galvanized Exterior



**Metalbest Chimney Systems**  
"The Coolest Under the Hottest Conditions..."



# Metalbest® Chimney System (MCS) Insulated Pipe and Accessories

The rugged all-fuel chimney designed for maximum safety and performance!

Insulated Pipe (5", 6", 7" & 8" I.D.;  
6", 9", 12" 18", 24", 36" & 48" Lengths)



Adjustable Insulated Pipe  
(T-AIP)



Insulated Tee & Plug  
(T-T)

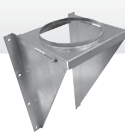


Insulated Elbow Kits  
15° - (T-EL15)  
30° - (T-EL30)



\* Chimney lengths are not included in kits, except the Thru-The-Wall kit contains a T-12 for the horizontal run.

Wall Support Kit  
(T-WSK)



Finish Support Package  
(T-FSP)



Finish Support Package Round  
(T-FSPR)



Anchor Plate  
(T-AP)



Roof Support Package  
(T-RSP)



Support Box  
(T-SB)



Interior Resupport  
(T-IR)



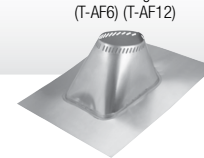
Round Top  
(T-CT)



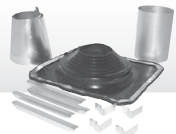
Storm Collar  
(T-SC)



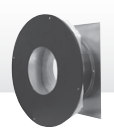
Adjustable  
Flashing  
(T-AF6) (T-AF12)



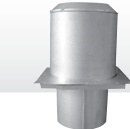
Rubber Boot Flashing Kit  
(URBAK)



Insulated Wall Thimble  
(T-WT)



Attic Insulation Shield  
(T-AIS)



Fire Stop/Joist Shield  
(JS)



Dripless Stove Pipe  
Adapter W/Coupler (T-DSAC)



Dripless Stove Pipe Adapter  
(T-DSA)



Roof Brace Kit (T-RBK)  
(Pipe Not Included)



Wall Band  
(T-WB)



Adjustable Pitched Ceiling Plate  
(T-PCPAJ)



Finish Collar  
(T-FC)



Trim Plate  
(T-PS)



SUSI Insulation



PIPE DIAMETER (choose one):	5"	6"	7"	8"	U-Ultra Temp.	G-Galva Temp.
ITEM	PRODUCT CODE				QUANTITY	PRICE
<b>INSULATED CHIMNEY PIPE</b>						
6" LENGTH (T6)	20X006U or 20X006G				_____	_____
9" LENGTH (T9)	20X009U or 20X009G				_____	_____
12" LENGTH (T12)	20X012U or 20X012G				_____	_____
18" LENGTH (T18)	20X018U or 20X018G				_____	_____
24" LENGTH (T24)	20X024U or 20X024G				_____	_____
36" LENGTH (T36)	20X036U or 20X036G				_____	_____
48" LENGTH (T48)	20X048U or 20X048G				_____	_____
ADJ. INSULATED PIPE (T-AIP)	20X011U				_____	_____
INSULATED TEE (T-T)	20X100 or 20X100G				_____	_____
15" INSULATED ELBOW KIT (T-EL15)*	20X206 or 20X206G				_____	_____
30" INSULATED ELBOW KIT (T-EL30)*	20X211 or 20X211G				_____	_____
WALL SUPPORT KIT (T-WSK)	20X430				_____	_____
FINISH SUPPORT**	20X410(FSP) or 20X411(FSPR)				_____	_____
ANCHOR PLATE (T-AP)	20X400				_____	_____
ROOF SUPPORT (T-RSP)	20X420 or 20X420G				_____	_____
SUPPORT BOX (T-SB)	20X424				_____	_____
INTERIOR RESUPPORT	20X435				_____	_____
ROUND TOP (T-CT)	20X800				_____	_____
STORM COLLAR (T-SC)	20X810				_____	_____
ADJUSTABLE FLASHING (T-AF6)	20X825				_____	_____
2/12 TO 6/12					_____	_____
ADJUSTABLE FLASHING (T-AF 12)	20X830				_____	_____
6/12 TO 12/12					_____	_____
RUBBER BOOT FLASHING KIT (T-TF)	200275				_____	_____
ATTIC INSULATION SHIELD (T-AIS)	20X490				_____	_____
INSULATED WALL THIMBLE (T-WT)	20X463				_____	_____
FIRE STOP/JOIST SHIELD (T-JS)	20X465				_____	_____
DRIPLESS SMOKE PIPE ADAPTER WITH COUPLER (T-DSAC)	20X240				_____	_____
DRIPLESS SMOKE PIPE ADAPTER (T-DSA)	20X242				_____	_____
ROOF BRACE KIT (T-RBK or URBAK)	20X440(FRBK) or 200240(URBAK)				_____	_____
WALL BAND (T-WB)	20X520				_____	_____
ADJ. PITCHED CEILING PLATE 0/12-6/12 (T-PCPAJ)	20X512				_____	_____
ADJ. PITCHED CEILING PLATE 6/12-12/12 (T-PCPAJ/2)	20X514				_____	_____
FINISH COLLAR (T-FC)	20X480				_____	_____
TRIM PLATE (T-PS)	20X488				_____	_____
SUSI INSULATION (SUSI)	2000001				_____	_____
					<b>TOTAL</b>	_____

\*2 Elbows, 2 Locking Bands, 1 Interior Resupport and Couplers

\*\* (T-FSP) SQUARE (T-FSPR) ROUND

For a complete product catalog, order All Fuel Catalog #MBAFC00-E.

## CHIMNEY KITS

ITEM	PRODUCT CODE	QUANTITY	PRICE
Roof Termination Kit (CT, AF6 & SC)	20X600	_____	_____
Flat Ceiling Support Kit (CT, AIS, SC, FSP, AF6 & DSAC)	20X620	_____	_____
Pitched Ceiling Support Kit (CT, SC, FC, RSP, DSAC & PCPAJ)	20X621 or 20X621G	_____	_____
THRU-THE-WALL SUPPORT KIT (CT, WB, IT, FC, WSK, IWT, CPA & T-12)	20X622 or 20X622G	_____	_____

## DSP - DOUBLE WALL STOVE PIPE Available in 6", 7", 8"

PIPE DIAMETER (choose one):	6"	7"	8"		
ITEM	PRODUCT CODE			QUANTITY	PRICE
Vertical Installation Kit, Includes					
Telescoping length 39"-66" (DSP-VK)	26X610			_____	_____
36" Length (DSP-36)	26X036			_____	_____
24" Length (DSP-24)	26X024			_____	_____
12" Length (DSP-12)	26X012			_____	_____
12" Adjustable Length (DSP-AL)	26X086			_____	_____
90° Elbow (DSP-E9K)	26X230			_____	_____
45° Elbow (DSP-E4-1)	26X215			_____	_____
Tee with Insulated Cap (DSP-TE-1)	26X100			_____	_____
Chimney Pipe Adapter (DSP-CPA)	26X240			_____	_____

We carry a full line of increasers and decreasees to fit 6", 7" and 8" diameters.

For a complete product catalog, order Stove Pipe Catalog #DSP002-E.

## Fuels and Appliances

Ultra-Temp and Galva-Temp (MCS) systems are certified to UL103HT for All-Fuel Chimney systems in sizes 5", 6", 7" and 8". These Type A-Vent Chimneys have been tested, listed and certified to meet the 2100 degree safety standard by Underwriters Laboratories. Sizes 10"-24" Type A-Vent Chimneys have been tested, listed and certified to UL103 (1700 degree) safety standard by Underwriters Laboratories.

## A System for Every Installation

The MCS includes a variety of components to meet every installation requirement. These components may be combined in a wide variety of ways to solve almost any chimney installation problem. For additional information on part selection, refer to the guide pages and diagrams located in this catalog.

## Complete Product Information

The Ultra-Temp and Galva-Temp (MCS) product lines are supported by the website at [www.selkirkcorp.com](http://www.selkirkcorp.com). Visit our site for product catalogs, installation instructions and web-based tools, including an On-Line Chimney Planner, Dealer Locator, Selkirk University On-Line Training and more.