



# Ultimate StovePipe™

All-Fuel, Double Wall Chimney Connector System

US and CANADA



## TABLE OF CONTENTS

---

Typical Installations For Model USP .....	3
Introduction/Construction Features .....	4
Lengths .....	5
Telescopic Lengths .....	5
Adjustable Lengths.....	6
Finishing Bands .....	6
30° Elbows.....	7
45° Elbows.....	7
90° Elbows .....	7
Tees .....	8
Masonry Adapters.....	8
Increases.....	8
Reducers .....	9
Low Profile Stove Adapters .....	9
Jotul Stove Adapter .....	9
Oval-To-Round Adapters.....	10
In-Line Dampers.....	10
Elbow Offset Charts.....	11
Smart Choice Warranty .....	12

# Typical Installations

MASONRY INSTALLATION



CLEANOUT INSTALLATION



STRAIGHT-UP INSTALLATION



THROUGH THE WALL INSTALLATION



# Ultimate StovePipe

## MODEL USP DOUBLE-WALL STOVEPIPE

Ultimate StovePipe is designed to provide optimal wood stove performance and has a sleek, smooth, clean-look to compliment any stove and home.

Double wall stovepipe is the best choice to connect a freestanding stove to a chimney system. In comparison to single wall stove pipe, it offers:

- Reduces clearance to combustible materials, 6" versus 18"
- Reduces creosote formation
- Enhances Draft

## FEATURES

- Smooth, clean appearance on all components - pipe lengths, elbows and tees - to compliment any stove & home interior
- Sleek, smooth, clean-looking welded seams on inner and outer
- Satin coat steel 0.018" outer casing specifically designed for optimum paint adhesion and scratch resistance
- Stainless steel inner liner warms quickly, holds the heat in and improves efficiency
- Air-insulated, double wall design - approximately 7/16" air space
  - Provides better insulation & heat retention
  - Allows flue to warm up quickly to establish strong draft
  - Reduces moisture to minimize creosote build-up & minimize maintenance
- Joints secured with screws for easy assembly and inspection
- Pre-drilled pilot holes for fast installation
- Faster start-ups lead to less smoke & less pollution in the environment
- Maintains higher flue-gas temperatures
- Results in lower outer surface temperature
- Easily fits most stoves, including cast iron stoves and stoves with oval collars
- Drip-free design to prevent creosote leakage
- Components individually packed
- Smart Choice Warranty



## CERTIFICATION

- Tested & certified to CAN/ULC-S641 (Canada) and temperature requirements of UL 103 TYPE HT (USA)
- 6" clearance to combustibles in all diameters - even when installed in a corner, or parallel with a ceiling
- NOTE - Always consult the stove manufacturer's installation instructions for installation requirements

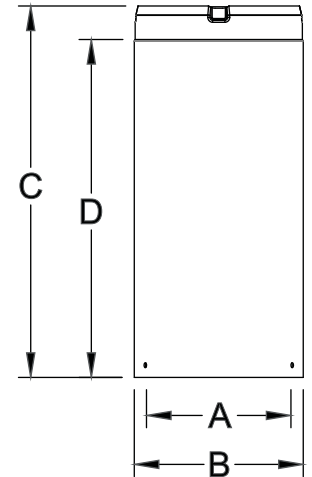


Forrest Stove Bright Metallic Black #6309

- 6", 7", and 8" diameters
- 6", 12", 18", 24", 36", and 48" lengths
- Easy to install and disassemble
- Hardware pack included

### LENGTHS

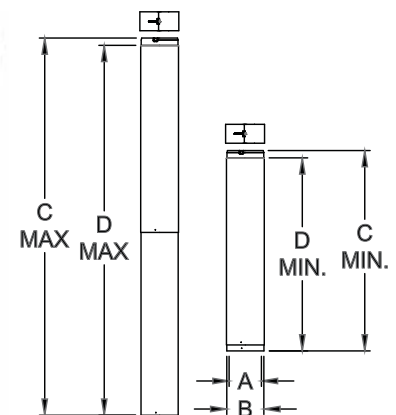
Size	Product Number	Part Number	A	B	C	D
6"	276006	6USP-L6	6"	6 7/8"	6"	4 5/8"
6"	276012	6USP-L12	6"	6 7/8"	12"	10 5/8"
6"	276018	6USP-L18	6"	6 7/8"	18"	16 5/8"
6"	276024	6USP-L24	6"	6 7/8"	24"	22 5/8"
6"	276036	6USP-L36	6"	6 7/8"	36"	34 5/8"
6"	276048	6USP-L48	6"	6 7/8"	48"	46 5/8"
7"	277006	7USP-L6	7"	7 7/8"	6"	4 5/8"
7"	277012	7USP-L12	7"	7 7/8"	12"	10 5/8"
7"	277018	7USP-L18	7"	7 7/8"	18"	16 5/8"
7"	277024	7USP-L24	7"	7 7/8"	24"	22 5/8"
7"	277036	7USP-L36	7"	7 7/8"	36"	34 5/8"
7"	277048	7USP-L48	7"	7 7/8"	48"	46 5/8"
8"	278006	8USP-L6	8"	8 7/8"	6"	4 5/8"
8"	278012	8USP-L12	8"	8 7/8"	12"	10 5/8"
8"	278018	8USP-L18	8"	8 7/8"	18"	16 5/8"
8"	278024	8USP-L24	8"	8 7/8"	24"	22 5/8"
8"	278036	8USP-L36	8"	8 7/8"	36"	34 5/8"
8"	278048	8USP-L48	8"	8 7/8"	48"	46 5/8"



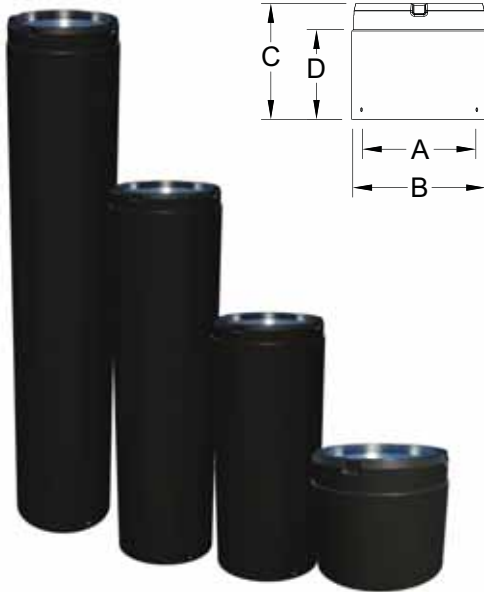
- 6", 7", and 8" diameters
- Two-piece telescoping section comprised of (1) 36" Length and (1) 36" Adjustable Length
- Provides installation flexibility from stove to the chimney system
- Wide Finishing Band included
- Hardware pack included

### TELESCOPIC LENGTHS

Size	Product Number	Part Number	A	B	C MIN	C MAX	D MIN	D MAX
6"	276066	6USP-TL	6"	6 7/8"	39 1/4"	72"	35 3/4"	68 1/2"
7"	277066	7USP-TL	7"	7 7/8"				
8"	278066	8USP-TL	8"	8 7/8"				



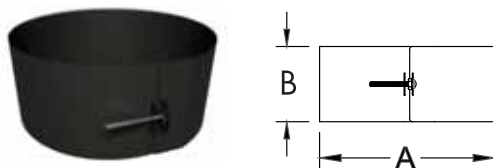
**ADJUSTABLE LENGTHS**



- 6", 7", and 8" diameters
- 6", 12", 18" and 36" adjustable lengths
- Adjustable Lengths slide over any regular length for installation flexibility
- Adjustable Lengths may be used as a Stove Adapter
- Use in a vertical and/or horizontal installation
- Hardware pack included

Size	Product Number.	Part Number	A	B	C	D (MIN)	D (MAX)
6"	276004	6USP-AL6	6"	6 7/8"	6"	2"	4"
6"	276010	6USP-AL12	6"	6 7/8"	12"	2"	10"
6"	276016	6USP-AL18	6"	6 7/8"	18"	2"	16"
6"	276034	6USP-AL36	6"	6 7/8"	36"	2"	34"
7"	277004	7USP-AL6	7"	7 7/8"	6"	2"	4"
7"	277010	7USP-AL12	7"	7 7/8"	12"	2"	10"
7"	277016	7USP-AL18	7"	7 7/8"	18"	2"	16"
7"	277034	7USP-AL36	7"	7 7/8"	36"	2"	34"
8"	278004	8USP-AL6	8"	8 7/8"	6"	2"	4"
8"	278010	8USP-AL12	8"	8 7/8"	12"	2"	10"
8"	278016	8USP-AL18	8"	8 7/8"	18"	2"	16"
8"	278034	8USP-AL36	8"	8 7/8"	36"	2"	34"

**WIDE FINISHING BANDS**



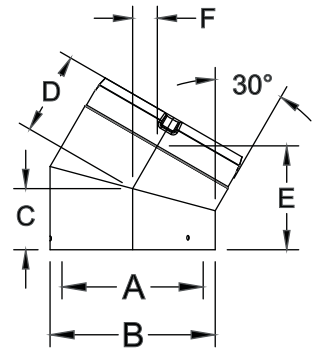
- 6", 7", and 8" diameters
- Use to conceal & finish connection between Ultimate StovePipe at ceiling support or in a through the wall application
- Can also be used to conceal the connecting joint at the chimney adapter
- Hardware pack included

Size	Product Number	Part Number	A	B
6"	276261	6USP-WFB	6 7/8"	3 1/2"
7"	277261	7USP-WFB	7 7/8"	
8"	278261	8USP-WFB	8 7/8"	

- 6", 7", and 8" diameters
- Use fixed 30° elbow to offset flue as needed
- Non-positional connection system allows 360° rotation
- Hardware pack included

Size	Product Number	Part Number	A	B	C	D	E	F
6"	276211	6USP-E30	6"	6 7/8"	2 1/2"	3 1/2"	4 1/4"	1"
7"	277211	7USP-E30	7"	7 7/8"	2 5/8"	3 5/8"	4 1/2"	1 1/8"
8"	278211	8USP-E30	8"	8 7/8"	2 3/4"	3 3/4"	4 3/4"	1 1/8"

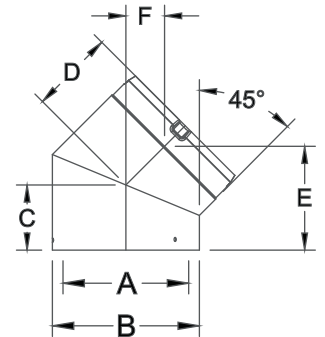
### 30° ELBOWS



- 6", 7", and 8" diameters
- Use fixed 45° elbow to offset flue as needed
- Non-positional connection system allows 360° rotation
- Hardware pack included

Size	Product Number	Part Number	A	B	C	D	E	F
6"	276215	6USP-E45	6"	6 7/8"	3"	3 7/8"	4 7/8"	1 3/4"
7"	277215	7USP-E45	7"	7 7/8"	3 1/4"	4 1/8"	5 1/4"	2"
8"	278215	8USP-E45	8"	8 7/8"	3 1/2"	4 3/8"	5 5/8"	2 1/8"

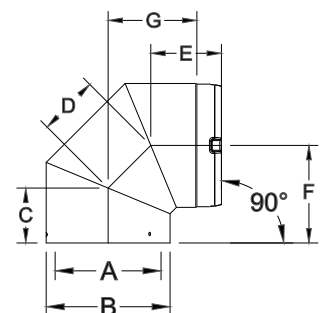
### 45° ELBOWS



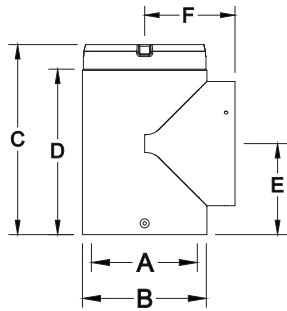
- 6", 7", and 8" diameters
- Use fixed 90° elbow to offset flue as needed, or in a through-the-wall installation
- Non-positional connection system allows 360° rotation
- Hardware pack included

Size	Product Number	Part Number	A	B	C	D	E	F	G
6"	276230	6USP-E90	6"	6 7/8"	3"	3 3/8"	4"	5 3/8"	4 7/8"
7"	277230	7USP-E90	7"	7 7/8"	3 1/4"	3 3/4"	4 1/8"	5 7/8"	5 3/8"
8"	278230	8USP-E90	8"	8 7/8"	3 1/2"	4 1/4"	4 3/8"	6 3/8"	5 7/8"

### 90° ELBOWS



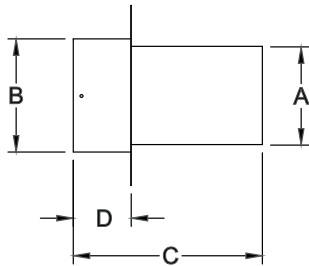
TEES



- 6", 7", and 8" diameters
- Includes Tee Cap for easy inspection & cleaning access
- Hardware pack included

Size	Product Number	Part Number	A	B	C	D	E	F
6"	276100	6USP-T	6"	6 7/8"	10 5/8"	9 1/4"	5 1/8"	5 1/8"
7"	277100	7USP-T	7"	7 7/8"	11 5/8"	10 1/4"	5 5/8"	5 5/8"
8"	278100	8USP-T	8"	8 7/8"	12 5/8"	11 1/4"	6 1/8"	6 1/8"

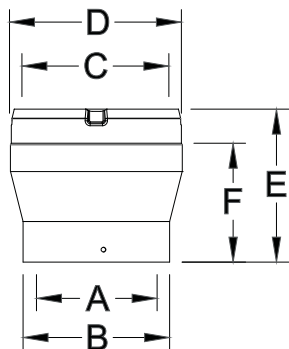
MASONRY ADAPTERS



- 6", 7", and 8" diameters
- For installations through a masonry wall
- Use to connect Ultimate StovePipe to an existing masonry chimney or a relined masonry chimney with stainless steel liner
- Hardware pack included

Size	Product Number	Part Number	A	B	C	D
6"	276247	6USP-MA	6"	6 7/8"	11 1/2"	3 1/2"
7"	277247	7USP-MA	7"	7 7/8"		
8"	278247	8USP-MA	8"	8 7/8"		

INCREASERS



- 4 Sizes - 5" to 6", 6" to 7", 6" to 8" and 7" to 8"
- Use to increase to a larger diameter chimney system
- Hardware pack included

**Note:** Increasing the diameter may reduce draft and increase creosote build-up.

Size	Product Number	Part Number	A	B	C	D	E	F
5" to 6"	275306	5USP-IN6	5"	5 7/8"	6"	6 7/8"	6 1/8"	4 3/4"
6" to 7"	276307	6USP-IN7	6"	6 7/8"	7"	7 7/8"	6 1/8"	4 3/4"
6" to 8"	276308	6USP-IN8	6"	6 7/8"	8"	8 7/8"	8 1/8"	6 3/4"
7" to 8"	277308	7USP-IN8	7"	7 7/8"	8"	8 7/8"	6 1/8"	4 3/4"

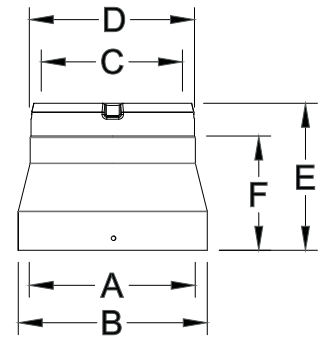


- 3 sizes - 7" to 6", 8" to 7", and 8" to 6"
- Use to reduce the diameter of the system to accommodate a range of flue sizes
- Hardware pack included

**Note:** Check with appliance manufacturer or local code authorities for acceptable use.

Size	Product Number	Part Number	A	B	C	D	E	F
7" to 6"	277366	7USP-RE6	7"	7 7/8"	6"	6 7/8"	6 1/8"	4 3/4"
8" to 6"	278366	8USP-RE6	8"	8 7/8"	6"	6 7/8"	8 1/8"	6 3/4"
8" to 7"	278367	8USP-RE7	8"	8 7/8"	7"	7 7/8"	6 1/8"	4 3/4"

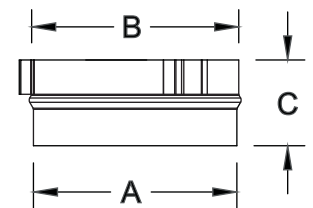
### REDUCERS



- 6", 7", and 8" diameters
- Use to connect Ultimate StovePipe to a flush, recessed or standard appliance outlet
- Pair with an Adjustable Length to conceal the Low Profile Adapter & create a seamless look

Size	Product Number	Part Number	A	B	C
6"	276249	6USP-LPSA	5 15/16"	6"	2 1/2"
7"	277249	7USP-LPSA	6 15/16"	7"	
8"	278249	8USP-LPSA	7 15/16"	8"	

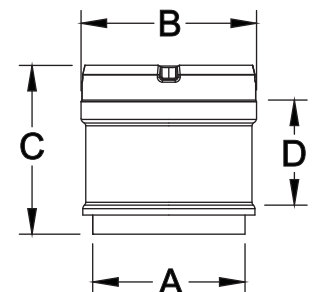
### LOW PROFILE STOVE ADAPTERS



- 6" diameter
- Use to convert Jotul flue outlets to Ultimate StovePipe

Size	Product Number	Part Number	A	B	C	D
6"	276245	6USP-SAJOTUL	6"	6 7/8"	6 5/8"	4 1/4"

### JOTUL STOVE ADAPTER

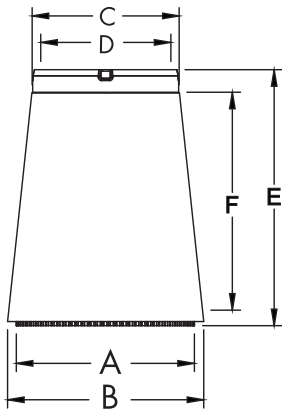


**OVAL-TO-ROUND ADAPTERS**



- 8" oval diameters
- Use to convert Oval flue outlets to round Ultimate StovePipe
- Hardware pack included

Size	Product Number	Part Number	A	B	C	D	E	F
8" to 8"	278250	8USP-ORA	6" x 10 5/8"	6 3/4" x 11 1/2"	8"	8 7/8"	15 1/4"	12 7/8"
8" to 6"	278251	8USP-ORA6	6" x 10 5/8"	6 3/4" x 11 1/2"	6"	6 7/8"		



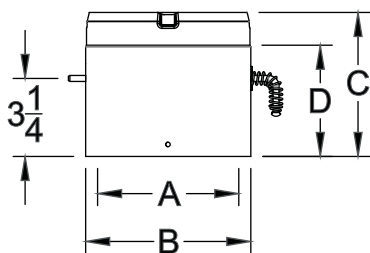
**IN-LINE DAMPERS**



- 6", 7", and 8" diameters
- Use to control the air being drawn through the chimney and to control the stove's combustion
- Designed to be installed in a vertical run 2 to 3 feet above the stove
- Hardware pack included

**Note:** Check with appliance manufacturer for recommended use.

Size	Product Number	Part Number	A	B	C	D
6"	276260	6USP-DK	6"	6 7/8"	6"	4 5/8"
7"	277260	7USP-DK	7"	7 7/8"		
8"	278260	8USP-DK	8"	8 7/8"		



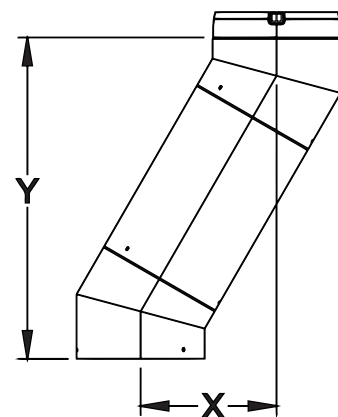
### ELBOW OFFSET CHART

30° Elbow - 2x E30 with 1x Length				45° Elbow - 2x E45 with 1x Length				90° Elbow - 2x E90 with 1x Length			
Size	Pipe Length	X - Offset	Y - Rise	Size	Pipe Length	X - Offset	Y - Rise	Size	Pipe Length	X - Offset	Y - Rise
6"	0"	2 1/4"	8 5/8"	6"	0"	4"	9 1/2"	6"	0"	10 3/8"	10 3/8"
	6"	4 5/8"	12 5/8"		6"	7 1/4"	12 3/4"		6"	15"	
	12"	7 1/2"	17 7/8"		12"	11 1/2"	17"		12"	21"	
	18"	10 1/2"	23"		18"	15 3/4"	21 1/4"		18"	27"	
	24"	13 1/2"	28 1/4"		24"	20"	25 1/2"		24"	33"	
	36"	19 1/2"	38 5/8"		36"	28 1/2"	34"		36"	45"	
	48"	25"	48 1/8"		48"	36 1/4"	41 3/4"		48"	56"	
7"	0"	2 3/8"	9 1/8"	7"	0"	4 1/4"	10 1/4"	7"	0"	11 3/8"	11 3/8"
	6"	4 3/4"	13 1/8"		6"	7 1/2"	13 1/2"		6"	16"	
	12"	7 5/8"	18 3/8"		12"	11 3/4"	17 3/4"		12"	22"	
	18"	10 5/8"	23 1/2"		18"	16"	22"		18"	28"	
	24"	13 5/8"	28 3/4"		24"	20 1/4"	26 1/4"		24"	34"	
	36"	19 5/8"	39 1/8"		36"	28 3/4"	34 3/4"		36"	46"	
	48"	25 1/8"	48 5/8"		48"	36 1/2"	42 1/2"		48"	57"	
8"	0"	2 5/8"	9 5/8"	8"	0"	4 1/2"	11"	8"	0"	12 3/8"	12 3/8"
	6"	5"	13 5/8"		6"	7 3/4"	14 1/4"		6"	17"	
	12"	7 7/8"	18 7/8"		12"	12"	18 1/2"		12"	23"	
	18"	10 7/8"	24"		18"	16 1/4"	22 3/4"		18"	29"	
	24"	13 7/8"	29 1/4"		24"	20 1/2"	27"		24"	35"	
	36"	19 7/8"	39 5/8"		36"	29"	35 1/2"		36"	47"	
	48"	25 3/8"	49 1/8"		48"	36 3/4"	43 1/4"		48"	58"	

30° Elbow - 2x E30 with 1x Telescopic Length						
Size	Telescopic Length		X - Offset		Y - Rise	
	MIN	MAX	MIN	MAX	MIN	MAX
6"	35 3/4"	68 1/8"	20 1/8"	36 1/4"	39 5/8"	67 5/8"
7"	35 3/4"	68 1/8"	20 1/4"	36 3/8"	40 1/8"	68 1/8"
8"	35 3/4"	68 1/8"	20 1/2"	36 5/8"	40 5/8"	68 5/8"

45° Elbow - 2x E45 with 1x Telescopic Length						
Size	Telescopic Length		X - Offset		Y - Rise	
	MIN	MAX	MIN	MAX	MIN	MAX
6"	35 3/4"	68 1/8"	29 1/4"	52 1/8"	34 3/4"	57 5/8"
7"	35 3/4"	68 1/8"	29 1/2"	52 3/8"	35 1/2"	58 3/8"
8"	35 3/4"	68 1/8"	29 3/4"	52 5/8"	36 1/4"	59 1/8"

90° Elbow - 2x E90 with 1x Telescopic Length						
Size	Telescopic Length		X - Offset		Y - Rise	
	MIN	MAX	MIN	MAX	MIN	MAX
6"	35 3/4"	68 1/8"	46 1/8"	78 1/2"	10 3/8"	
7"	35 3/4"	68 1/8"	47 1/8"	79 1/2"	11 3/8"	
8"	35 3/4"	68 1/8"	48 1/8"	80 1/2"	12 3/8"	



### “SMART CHOICE” LIMITED LIFETIME WARRANTY

Selkirk Corporation, (“Selkirk”, “we”, “us”, “our”) warrants our residential Chimney & Venting products (\* defined below) to be free from defects in material and workmanship. For products installed after January 1, 2009, for a period of Ten (10) years from original installation, we will provide replacement product with a similar or like quality of available Selkirk product, **free of charge**, excluding any installation costs. From the Eleventh (11) through Fifteenth (15) years, we will provide replacement product at a cost of 75% off the published Retail Price in effect on the date the claim is received, excluding any installation costs. At expiration of the Fifteen (15) year term, we will provide replacement product at a cost of 50% off the published Retail Price in effect on the date the claim is received excluding any installation costs. This warranty coverage is non-transferable and applies exclusively to the original consumer.

### PROFESSIONAL INSTALLATION:

If installation is performed by Professional Installers certified in Canada by WETT or APC or in the USA by NFI or CSIA, we will provide replacement product with a similar or like quality of available product, free of charge (excluding any installation costs) for the full Fifteen (15) years from the date of original installation. To be eligible for this additional warranty the consumer must provide a proof of installation by a Professional Installer when submitting a claim.

### LIMITATIONS:

BUYER’S REMEDIES ARE LIMITED TO REPAIR OR REPLACEMENT OF THE PRODUCT AND DO NOT INCLUDE INSTALLATION COSTS. EXCEPT AS SET FORTH HEREIN, ALL OTHER WARRANTIES (EXPRESS OR IMPLIED, INCLUDING THE WARRANTIES OF MERCHANTABILITY AND FITNESS FOR A PARTICULAR PURPOSE) ARE HEREBY DISCLAIMED. IT IS AGREED THAT THIS SHALL BE THE SOLE AND EXCLUSIVE REMEDY OF THE BUYER. IN NO EVENT SHALL WE BE LIABLE FOR ANY CONSEQUENTIAL, SPECIAL OR PUNITIVE DAMAGES ARISING DIRECTLY OR INDIRECTLY FROM THE USE OF THE PRODUCTS WHETHER BASED ON WARRANTY, CONTRACT NEGLIGENCE OR STRICT LIABILITY.

ALL LENGTHS, TEES, ELBOWS, AND COMPONENTS SUPPLIED BY US ARE SUBJECT TO WARRANTY COVERAGE. PRODUCT SUPPLIED BY US AS REPLACEMENT FOR ORIGINAL MATERIAL WILL BE SUBJECT TO A ONE-YEAR WARRANTY COVERAGE WITH THE EXCEPTION OF SAF-T PIPE WHICH IS SUBJECTED TO A 5 YEAR LIMITED WARRANTY COVERAGE FROM DEFECTS IN MATERIAL OR WORKMANSHIP WHEN PROPERLY INSTALLED PURSUANT TO THE MANUFACTURER’S INSTALLATION INSTRUCTIONS AND APPROPRIATE CODES.

**WARNING:** FAILURE TO INSTALL OR OPERATE PRODUCTS ACCORDING TO THE MANUFACTURER’S INSTRUCTIONS, OR FAILURE TO USE PRODUCTS WITH RESIDENTIAL APPLIANCES THAT HAVE BEEN CERTIFIED AT AN ACCREDITED LABORATORY WILL VOID ALL APPLICABLE WARRANTIES.

### THIS WARRANTY DOES NOT COVER:

- (a) any non-stainless base tee unit mounted or connected to an Insulated Chimney system;
- (b) costs (labor or otherwise \*\*) associated with either removing a previously installed product, installing a replacement product, transportation or return of a product, or transportation of replacement product;
- (c) damage to the finish of products caused by the use of improper sealants/solvents/chemicals or improper (or lack of) cleaning methods;
- (d) damage resulting from normal wear and tear, corrosion from salt air or failure to reasonably clean, care for or maintain products in accordance with our installation instructions/recommendations;
- (e) damage (to products, appliances or structure) based on or resulting from improper installation or repair, misuse or abuse (including, but not limited to, excessive or improper operating condition), or alteration or adjustment other than in conformity with our installation instructions and specifications, whether performed by a contractor, service company, technician, or yourself;
- (f) any products that have been moved from their original installation site;
- (g) damage caused by burning driftwood, garbage, or any other prohibitive material that has been burned in the appliance served by the chimney;
- (h) damage that results from accidents such as riot, fire, flood, high winds, “acts of God”, or any other contingency beyond our control.

\*\* Due to the wide variance in installation practices and other conditions beyond our control, except as stated above, we do not guaranty or in any way warrant the installation of Chimney and Venting products.

**CLAIM PROCEDURE:** If you believe that a product is defective, notify us in writing at:

**SELKIRK CANADA**  
P.O. Box 526, Depot 1  
Hamilton, Ontario, CANADA, L8L 7X6  
ATTN: WARRANTY CLAIMS  
1.888.735.5475  
www.selkirkcorp.ca

**SELKIRK CORPORATION**  
4460 44th Street S.E., Suite F  
Grand Rapids, MI 49512  
ATTN: WARRANTY CLAIMS  
1.800.433.6341  
www.selkirkcorp.com

Notification should include a description of the product, model and serial number (if applicable) and a description of the product defect. Upon receipt of a written claim under this limited warranty and evidence of the date of purchase or installation, at our option and in our sole discretion, we will provide replacement product with similar or like quality of available product excluding any installation costs. We reserve the right to inspect or investigate any warranty claims prior to determining whether to provide replacement product. If, as determined by us, that repair or replacement of the product is not commercially practicable or cannot be completed in a timely manner, we may refund the prorated purchase price paid for the product upon verification by providing a copy of your invoice or receipt of bill of sale.

\*Selkirk products covered under this warranty: AFCL, ALT, BV (SD, MD, LD), CF, DCC, DFS, DSP, DT, DWC, DWS/SWC, E, FC (JSC), EFC, GT, GTL, HT, OV, PL, QC, R, RF, RV, SAF-T LINER, SAF-T PIPE, SC-1 (JM), SFCL, SPR, SPV, ST, SSFL, SSRL, U1, UPP, USP, UT, UTL, VP, WV.







BUILD FOR THE FUTURE

Customer Service and Support:

Airmate (USA).....	800.992.8368
Airmate (CAN) .....	888.735.5475
Ameriflow .....	800.252.8467
Amerivent (Retail) .....	800.252.8467
Amerivent (Hearth & Wholesale) ....	800.423.4270
Amerivent (Support).....	800.748.0392
AMPCO (USA) .....	800.669.3269
AMPCO (CAN).....	888.735.5475
Duravent .....	800.835.4429
Hart & Cooley.....	800.433.6341
Hart & Cooley (Support) .....	800.748.0392
Heatfab (USA).....	800.772.0739
Heatfab (CAN) .....	800.848.2149
Lima.....	800.423.4270
Milcor .....	800.774.5240
Portals Plus.....	800.774.5240
RPS.....	800.624.8642
Security Chimney (USA).....	800.361.4909
Security Chimney (CAN) .....	800.667.3387
Selkirk (USA) Residential .....	800.992.8368
Selkirk (USA) Commercial.....	800.848.2149
Selkirk (USA) Support.....	800.748.0392
Selkirk (CAN) .....	888.735.5475

Manufacturing & Distribution Centers:

CANADA	
Nobel, ON	Manufacturing
Laval, QC	Manufacturing
Prescott, ON	Distribution
USA	
Grand Rapids, MI	Center of Excellence
Dallas, TX	Distribution
Englewood, OH	Distribution
Huntsville, AL	Manufacturing & Distribution
Mira Loma, CA	Distribution
Nampa, ID	Manufacturing & Distribution
Turner Falls, MA	Manufacturing & Distribution
Vacaville, CA	Manufacturing
MEXICO	
Ojinaga, MX	Manufacturing
Mexicali, MX	Manufacturing

Corporate Headquarters:

Duravent Group  
 28 W. Adams, Suite 1810  
 Detroit, MI 48226  
 Tel: 800.835.4429  
 Email: [info@duraventgroup.com](mailto:info@duraventgroup.com)  
[www.duraventgroup.com](http://www.duraventgroup.com)



BUILD FOR THE FUTURE

[www.duraventgroup.com](http://www.duraventgroup.com)

