

# SELKIRK® Model DT Direct Vent and Model VP L-Vent Installation Instruction Supplement - Outlet Screen

This Instruction Supplement covers the use and installation of the optional Outlet Screen (OS) for pellet venting applications of Model DT Direct Temp and Model VP L-Vent.

Refer to main DT and VP installation instructions for overall system installation guidelines.



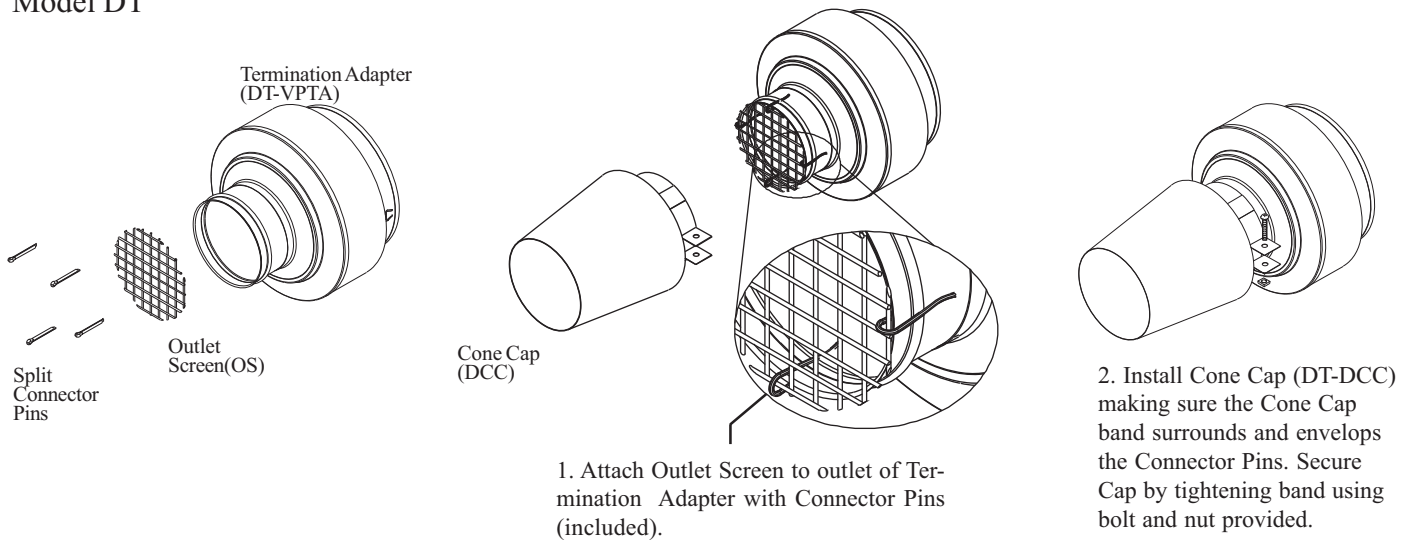
NOTE: Outlet Screen consists of a round mesh disk and 4 Split Connector Pins.

NOTE: Do not interchange Model DT and Model VP system parts/components.

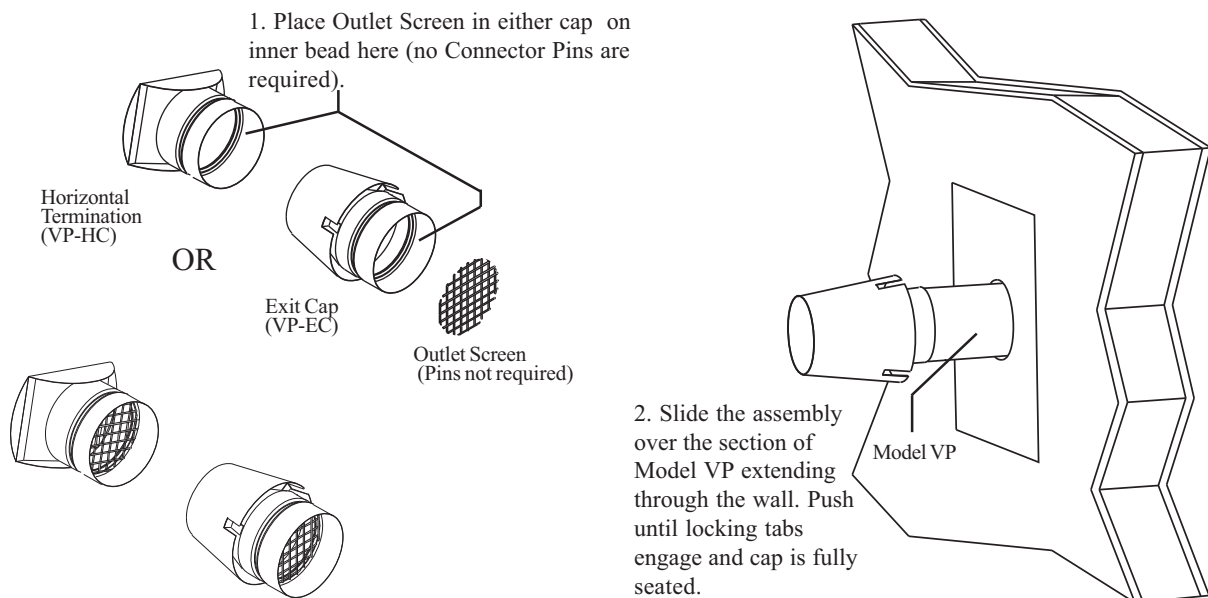
CAUTION: Wear gloves while handling parts to avoid personal injury.

Install Outlet Screen as shown.

## Model DT



## Model VP



0015208A-1009