



**ROYALL**<sup>TM</sup>  
Royall Manufacturing, Inc.

## COAL STOKER

### EFFICIENT

On demand heating of low water volumes prevents wasted energy and fuel.

### RELIABLE

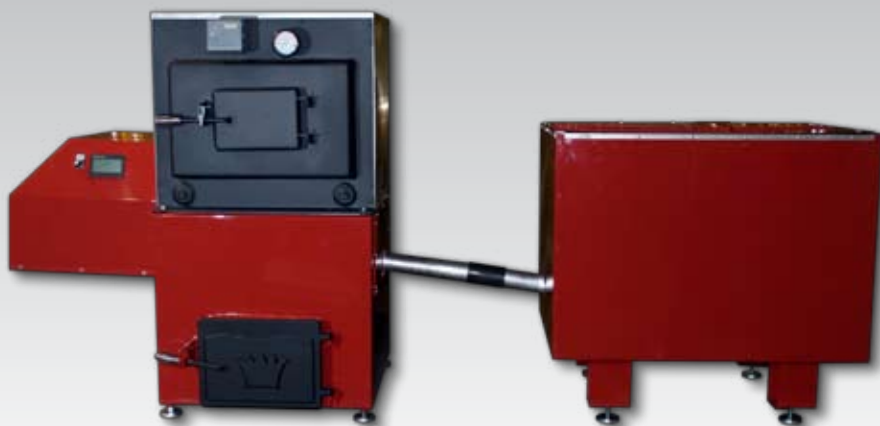
Royall has 40 years of proven experience in the industry refining our time tested design.

### DURABLE

The only solid fuel boiler with ASME certified water chambers, using ASTM A-36 hot rolled steel 5/16" and 1/4".

### SAFE

Designed and built using only the highest quality parts and processes that are ASME and UL approved for unmatched safety.



Radiant Heat



Domestic Water



Forced Air

### SIMPLY THE BEST

From workmanship to design, A Royall Furnace offers the best value available in the marketplace. Our formula for achieving successful results is simple:

- **QUALITY** – Products for years of service
- **VALUE** – Products at a fair price
- **SERVICE** – Experienced support
- **DESIGN** – Innovative and resourceful

#### Quick Facts

- ASME Certified
- Low Maintenance
- Available in sizes from 130k - 500k BTU's
- Indoor
- Residential or Commercial



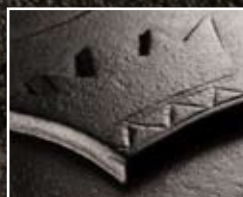
#### Stoker Pot

- Multi-fuel design
- Precision laser cut
- Bolt together design
- Replaceable Grates



#### Smart System

- Minimizes fuel consumption
- Prevents over heating
- Electronically controlled



#### Royall Treatment

- Limited lifetime warranty
- Strong customer service
- Advanced manufacturing



### 4150 - Coal Stoker/Boiler

Boiler	
Construction	1/4" and 5/16" A36 ASTM Certified Steel
Welding	Completed by ASME Certified Welders
Certification	ASME Inspected and Certified
Water Capacity	16.5 U.S. Gallons
Dry Weight	405 lbs.
Dimensions (WxLxH)	27 x 27 x 24 inches
Stoker	
Construction	A36 Hot Rolled Steel (varying thicknesses)
Welding	Completed by ASME Certified Welders
Feed System	1 1/2" Diameter 10 Ga (.135") Auger, Bottom Feed Fire Pot, AC Induction Drive Gear Motor (Speed Adjustable)
Induction Fan	549 CFM Squirrel Cage Blower, Adjustable Damping System
Dry Weight	105 lbs.
Boiler Base	
Construction	A36 Hot Rolled Steel (varying thicknesses)
Welding	Completed by ASME Certified Welders
Feet	1/2" Threaded Adjustable Leveling
Ash Door	Cast Iron w/ Royall Trademark Crown
Dry Weight	255 lbs.
Dimensions (WxLxH)	27 x 30 x 26 inches
Hopper	
Construction	16 Ga (.062") 304 Stainless Liner, 16 Ga. (.062") Powder Coated Steel Outer
Welding	Completed by ASME Certified Welders
Feet	1/2" Threaded Adjustable Leveling
Coal Capacity (Rice Coal)	Approximately 600 lbs.
Dry Weight	205 lbs.
Dimensions (WxLxH)	30 x 38 x 26 inches
Entire Unit	
Foot Print (WxLxH)	108 x 33 x 50 inches
Dry Weight	Approximately 1050 lbs.
Auger Speed	PLC Controlled Auger Speed (2-24 lbs./hour)
Draft Air Flow	PLC Damper Controlled (10-549 CFM)
Firepot Temperature	Monitored with Kyence Temperature Sensor
Ash Removal	Manual Ashpan (Daily)
Coal Fines Removal	Manual Lever (Daily)