



heatilator®

*The first name in fireplaces*



Pioneer III

EPA Wood-Burning Fireplace



## Product Overview

This EPA-approved wood-burning fireplace combines efficiency with rolling flames seen through the cast-iron framed glass door. Smart Burn Technology makes it easy to control the fire, enabling you to push a button, set the thermostat and walk away. This whole-house heater is available with rectangular and arched doors with three front choices.

## Features

- Smart Burn Technology – controls the air coming into your fire
- 4.1 cu. ft. firebox holds 24” logs for long-lasting heat
- 2 door styles with 3 front choices
- Up to 18 hours of burn time from one load
- 400-CFM fan system pushes heat further and faster into your room
- Certified to the EPA 2020 emissions standard



Mission Rectangular Front



Mission Arch Front



Forged Arch Front

## Options

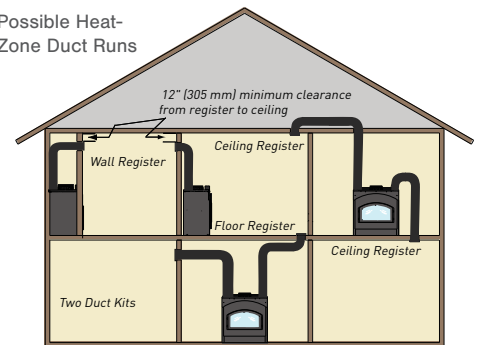
- Heat distribution kit
- Hearth extension
- Lintel bar

## Heat Management

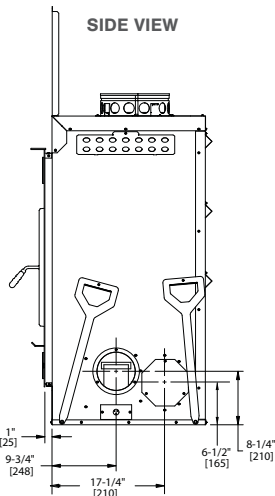
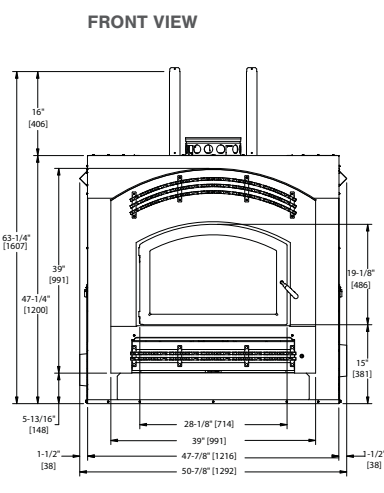
### Optional Heat-Zone Kit

With zone heating, you can easily reduce your energy consumption by up to 40%, and reduce your utility bill in the process. Using a Heatilator fireplace as a supplemental heating source, you can turn down your central furnace or boiler system and still maintain comfortable temperatures in your common living area.

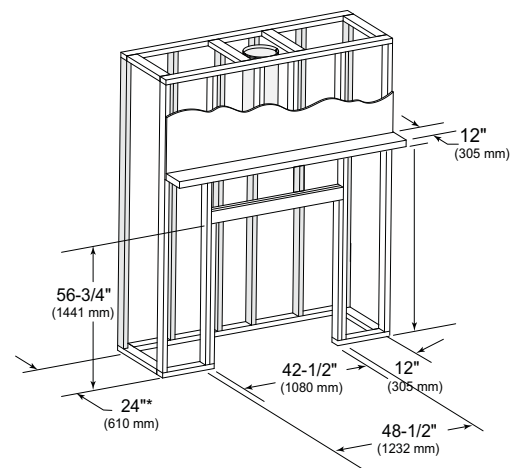
### Possible Heat-Zone Duct Runs



## Product Dimensions



## Framing Dimensions



Available from



### Our Sustainability Story

Our history of leadership in the hearth industry compels us to now lead the way in developing manufacturing practices that ensure our planet remains as durable, beautiful and long-lasting as our products. Find out how we are leading the industry in sustainable practices by scanning the code.

**heatilator**  
The first name in fireplaces

800-927-6841 | heatilator.com

### Limited Lifetime Warranty

The strongest in the industry, Heatilator provides a limited lifetime warranty on wood-burning products of the most important aspects: firebox and heat exchanger.

The information provided in this literature is for planning purposes only and subject to change. Please consult the installation instructions for actual installation. Actual product appearance may differ from product images. Fireplace glass and other surfaces get extremely HOT and can cause severe burns if touched. Keep a safe distance away. To learn more visit [www.heatilator.com/fireplace-safety](http://www.heatilator.com/fireplace-safety).

HTL-1113U-0624

