



Country™ Collection wood-burning stoves offer the ultimate in clean-burning, reliable heat to warm your home and your family.

**LENNOX**  
HEARTH PRODUCTS

  
**COUNTRY**  
COLLECTION



**Canyon™ ST310** shown with 24K gold-plated Olympic legs, gold-plated Traditional door, deco trim and custom-painted exterior (see your local dealer for information on custom paint).

■ The Country™ Collection line of wood-burning stoves offers a complete selection of products to fit your heating needs. Each stove is customizable with an array of door finishes, leg or pedestal options, and an optional heat-circulating blower. In addition, every wood stove that leaves our plant is built with premium-grade materials and the utmost commitment to quality. We incorporate innovative technology and designs to make Country Collection wood-burning stoves among the most beautiful, efficient, reliable, and environmentally friendly products on the market today. ■





**Striker™ S160** shown with Pedestal base and brushed nickel-plated Traditional door.



**Legacy™ S260** shown with Pedestal base, 24K gold-plated Traditional door and custom-painted exterior (see your local dealer for information on custom paint).

## STRIKER™ S160 – Small

700–1,400 SQ. FT. HEATING CAPACITY

### SPECIFICATIONS

Log Length	18" max.
Stovepipe Diameter	6"
Height	On Legs 27-1/2" On Pedestal 31"
Width	23-1/2"
Approximate Weight	310 lbs.
EPA Grams Per Hour	1.6
Firebox	18"W x 14"D
Efficiency	78.6%
Heating Capacity*	700–1,400 sq. ft.
Max. Output*	68,000 BTUs/hr.
Max. Burn Times*	6–8 hrs.



**Striker™ S160** shown with 24K gold-plated Arch door and 24K gold-plated Olympic legs.

The classic styling of the Striker™ S160 is surpassed only by its performance. The smallest wood stove of the group and one of the cleanest-burning non-catalytic stoves in the world, the Striker provides a lot of heat with very low emissions. Available with your choice of an Arch or Traditional door in a variety of finishes.

**Striker S160** shown with black Traditional door and Cascade legs.

## PERFORMER™ SS210/ST210 – Medium

1,200–2,000 SQ. FT. HEATING CAPACITY

### SPECIFICATIONS

Log Length	20" max.
Stovepipe Diameter	6"
Height	On Legs 30-3/8" On Pedestal 33-7/8"
Width	25-1/4"
Approximate Weight	436 lbs.
EPA Grams Per Hour	4.2
Firebox	20"W x 18"D
Efficiency	85%
Heating Capacity*	1,200–2,000 sq. ft.
Max. Output*	76,000 BTUs/hr.
Max. Burn Times*	7–9 hrs.



**Performer™ SS210** shown with brushed nickel-plated Traditional door and brushed nickel-plated Olympic legs.

Available as both a classic T-top and a more contemporary Step-top, the Performer™ is one of the most versatile wood stoves in the Country™ Collection. Whichever version you choose, the Performer SS/ST210 is perfect for your moderate heating needs.

**Performer ST210** shown with nickel-plated Arch door and black Olympic cast legs.

\*Square-foot heating capacities and burn times are approximations only. Actual performance may vary depending upon home design and insulation, ceiling heights, climate, condition and type of wood used, appliance location, burn rate, accessories chosen, chimney installation and how the appliance is operated.



## LEGACY™ S260 – Large

1,600–2,500 SQ. FT. HEATING CAPACITY

### SPECIFICATIONS

Log Length	22-1/2" max.	
Stovepipe Diameter	6" or 8"	
Height	On Legs	33"
	On Pedestal	36-1/2"
Width	28"	
Approximate Weight	487 lbs.	
EPA Grams Per Hour	4.1	
Firebox	22-1/2"W x 17-1/2"D	
Efficiency	79.2%	
Heating Capacity*	1,600–2,500 sq. ft.	
Max. Output*	79,000 BTUs/hr.	
Max. Burn Times*	7–11 hrs.	



The Legacy™ S260 is ideal for heating larger areas, up to 2,500 sq. ft. The Legacy S260 will complement any home with its Traditional door and a variety of upgrade options (available on all models). Choose from black, gold-plated, brushed gold-plated, nickel-plated or brushed nickel-plated accents.

**Legacy S260** shown with black Traditional door and Pedestal base.

## CANYON™ ST310 – Extra Large

2,000–3,500 SQ. FT. HEATING CAPACITY

### SPECIFICATIONS

Log Length	22-1/2" max.	
Stovepipe Diameter	6" or 8"	
Height	On Legs	38-1/2"
	On Pedestal	41-1/2"
Width	28-1/2"	
Approximate Weight	519 lbs.	
EPA Grams Per Hour	3.2	
Firebox	22-1/2"W x 19-1/2"D	
Efficiency	77.9%	
Heating Capacity*	2,000–3,500 sq. ft.	
Max. Output*	84,500 BTUs/hr.	
Max. Burn Times*	7–12 hrs.	



The Canyon™ ST310 provides serious heat output and is rated to heat up to 3,500 sq. ft. with burn times of 7–12 hrs. For extra comfort and heat circulation, add an optional 700-CFM blower (available on all free-standing wood-burning models). Available with a Traditional door in a variety of finishes.

**Canyon ST310** shown with brushed gold-plated Traditional door and brushed gold-plated Olympic legs.

\*Square-foot heating capacities and burn times are approximations only. Actual performance may vary depending upon home design and insulation, ceiling heights, climate, condition and type of wood used, appliance location, burn rate, accessories chosen, chimney installation and how the appliance is operated.

# CUSTOMIZE TO YOUR TASTE

## STEP 1: STOVE MODEL

Choose the stove that best fits your heating needs.



**Striker™ S160**  
700–1,400 sq. ft.\*



**Performer™ SS210**  
1,200–2,000 sq. ft.\*



**Performer™ ST210**  
1,200–2,000 sq. ft.\*



**Legacy™ S260**  
1,600–2,500 sq. ft.\*



**Canyon™ ST310**  
2,000–3,500 sq. ft.\*

## STEP 2: DOOR STYLE AND FINISH

Choose the door style and finish that are right for you. Finish options include: 24K gold-plated, brushed gold-plated, nickel-plated, or brushed nickel-plated.



**Traditional Door** – Available on S160, SS210, S260, ST310  
Black, 24K gold-plated, brushed gold-plated, nickel-plated,  
or brushed nickel-plated



**Arch Door** – Available on S160 and ST210 only  
Black, 24K gold-plated, brushed gold-plated, nickel-plated,  
or brushed nickel-plated

## STEP 3: ETCHED GLASS (optional)

Opt for standard plain glass or choose from four etched designs—Cattails, Floral, Sails, or Evergreen—available for both Traditional and Arch doors.



Cattails



Floral



Sails



Evergreen

## STEP 4: PEDESTAL or LEGS

Choose a pedestal or legs to customize your look.

### STANDARD PEDESTAL



**Ash Drawer Pedestal** – Convenient ash drawer with cover and lifting bail makes ash removal and disposal quick and easy.



### LEG STYLES AND FINISHES

Two leg styles are available, Cascade and Olympic. Choose the leg style and finish to best complement the look of your décor.



Cascade



Olympic  
cast – black



Gold-plated



Brushed  
gold-plated



Nickel-plated



Brushed  
nickel-plated

## STEP 5: BLOWER (optional)

Add an optional 700-CFM variable-speed blower, which will distribute heat in your living area. This blower has a switch to optimize performance and comfort with the option of thermal activation or manual control.



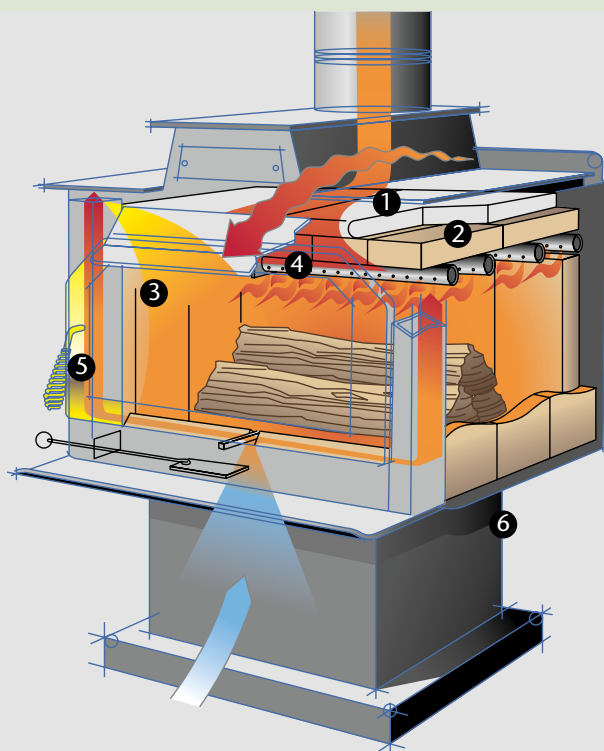
\*Square-foot heating capacities and burn times are approximations only. Actual performance may vary depending upon home design and insulation, ceiling heights, climate, condition and type of wood used, appliance location, burn rate, accessories chosen, chimney installation and how the appliance is operated.





**Performer™ ST210** shown with 24K gold-plated Arch door and 24K gold-plated Olympic legs.

## ANATOMY OF A COUNTRY™ COLLECTION WOOD STOVE



The Country™ Collection name is synonymous with quality products and clean-burning technology. Each Country Collection wood stove is EPA Phase II–certified and built with an exclusive non-catalytic combustion system that not only burns the wood, but also the smoke, providing clean emissions, a clear viewing window, and extra heat. A unique combination of premium-grade materials, quality craftsmanship, and sophisticated technology ensures that every wood stove we make will provide you and your family a lifetime of warmth.

## STANDARD FEATURES

- 1 Ceramic-Fiber Blanket**  
 This technology, developed by the engineers at NASA, but introduced to the hearth industry with the Country Collection, has 10 times the insulation value of firebrick. It radiates heat back into the firebox, creating higher efficiencies and cleaner glass.
- 2 Refractory Baffle**  
 The unique design assists in igniting fuel-rich gases, increasing efficiency and reducing emissions.
- 3 Integral Airwash System**  
 Preheated primary combustion air enters the firebox and sweeps across the viewing glass, keeping the glass clean and clear for less maintenance and a wide-open view of the fire.
- 4 Secondary Combustion**  
 Stainless steel afterburner tubes mix oxygen with unburned gases and smoke to create a secondary burn, providing clean emissions and utilizing a previously wasted fuel source. By igniting those gases your stove will get more heat out of every log, and help keep your fuel costs low.
- 5 Heavy-Duty Door**  
 The beauty of this feature lies in its simplicity. The machined door handle has no nuts or washers to loosen or wear, and the glass is sandwiched between the two-piece cast-iron door, forming a 360° seal that will last for years.
- 6 Premium Materials**  
 The exterior of every stove is made from heavy-gauge steel and all critical parts inside the firebox are made of stainless steel for long service life.

## LIMITED LIFETIME WARRANTY

We are proud to stand behind our stoves and we prove it by offering a Limited Lifetime Warranty.

***Backed by the Good Housekeeping Seal***

## SPECIFICATIONS

	STRIKER™ S160	PERFORMER™ SS210	PERFORMER™ ST210	LEGACY™ S260	CANYON™ ST310
Width	23-1/2"	25-1/4"	25-1/4"	28"	28-1/2"
Height: Cascade Legs (steel legs)	27-1/2"	27-1/2"	30-3/8"	33"	38-1/2"
Height: Olympic Legs (cast legs)	27-1/2"	27-1/2"	30-3/8"	33"	38-1/2"
Height: Pedestal	31"	31"	33-7/8"	36-1/2"	41-1/2"
Depth (door opening to rear shield)	17-3/4"	21-3/4"	21-3/4"	21-1/4"	23-1/2"
Approximate Weight: With Legs	316 lbs.	440 lbs.	442 lbs.	446 lbs.	525 lbs.
Approximate Weight: With Pedestal	310 lbs.	432 lbs.	436 lbs.	440 lbs.	519 lbs.
Stovepipe Diameter	6"	6"	6"	6" or 8"*	6" or 8"*

\*Consult your dealer or professional installer for recommended chimney sizes for your application. S260 and ST310 require reducer when using 6" stovepipe.

## CLEARANCES

Pipe Diameter	STRIKER S160			PERFORMER SS/ST210			LEGACY S260				CANYON ST310	
	6"	Single-Wall with Shield Connector	Double-Wall Connector	6"	Single-Wall with Shield Connector	Double-Wall Connector	6"	8"	Single-Wall Connector	Double-Wall Connector	6"	8"
A** = Flue Collar to Back Wall (US)	16"	10"	10"	16"	10"	10"	18"	12"	23"	16"	12"	12"
Flue Collar to Back Wall (CANADA)	19"	13"	13"	19"	13"	13"	18"	12"	23"	16"	12"	12"
C** = Flue Collar to Side Wall (US)	21"	18"	18"	24"	24"	18"	26"	23"	28"	25"	24"	24"
Flue Collar to Side Wall (CANADA)	24"	21"	21"	25"	25"	19"	26"	23"	28"	25"	24"	24"
G** = Flue Collar to Wall (US)	18"	13-1/2"	13-1/2"	18"	18"	15"	21"	21"	23"	22"	18"	18"
Flue Collar to Wall (CANADA)	21"	16-1/2"	16-1/2"	21"	21"	18"	21"	21"	23"	22"	18"	18"

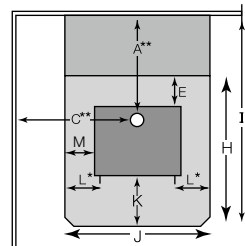
## HEARTH PROTECTION

E = Back of Stove (US)	0"	0"	0"	0"	0"	0"	0"	0"	0"	0"	0"	0"
Back of Stove (CANADA)	8"	8"	8"	8"	8"	8"	8"	8"	8"	8"	8"	8"
F† = Stove Corner to Wall	9-3/4"	5-1/2"	5-1/2"	9"	9"	6"	11"	11"	13"	12"	7-1/4"	7-1/4"
H = Pad Depth Minimum (US)	33-3/4"	33-3/4"	33-3/4"	37-3/4"	37-3/4"	37-3/4"	37-1/4"	37-1/4"	37-1/4"	37-1/4"	43-1/2"	43-1/2"
Pad Depth Minimum (CANADA) (E + Depth of Stove + K)	43-3/4"	43-3/4"	43-3/4"	47-3/4"	47-3/4"	47-3/4"	47-1/4"	47-1/4"	47-1/4"	47-1/4"	51-1/2"	51-1/2"
I = Pad Depth to Back Wall (US)	47-3/4"	41-3/4"	41-3/4"	51"	45"	45"	52-3/4"	46-3/4"	57-3/4"	50-3/4"	53"	53"
Pad Depth to Back Wall (CANADA)	52-3/4"	46-3/4"	46-3/4"	56"	50"	50"	54-3/4"	48-3/4"	59-3/4"	52-3/4"	53"	53"
J = Pad Width Minimum (US)	33-1/2"	33-1/2"	33-1/2"	34-3/4"	34-3/4"	34-3/4"	37-1/2"	37-1/2"	37-1/2"	37-1/2"	38"	38"
Pad Width Minimum (CANADA)	39-1/2"	39-1/2"	39-1/2"	41-1/4"	41-1/4"	41-1/4"	44"	44"	44"	44"	44-1/2"	44-1/2"
K = Front of Stove (US)	16"	16"	16"	16"	16"	16"	16"	16"	16"	16"	20"	20"
Front of Stove (CANADA)	18"	18"	18"	18"	18"	18"	18"	18"	18"	18"	20"	20"
L = Measured from Door Opening (US)	8"	8"	8"	8"	8"	8"	8"	8"	8"	8"	8"	8"
M = Measured from Sides of Unit (CANADA)	8"	8"	8"	8"	8"	8"	8"	8"	8"	8"	8"	8"
T = Pad Depth to Corner (US)	58-1/2"	52"	52"	61-3/4"	61-3/4"	57-1/2"	66"	66"	68-3/4"	67-1/4"	68"	68"
Pad Depth to Corner (CANADA)	64-3/4"	58-1/2"	58-1/2"	63-3/4"	63-3/4"	68"	68"	68"	70-3/4"	69-1/4"	68"	68"

## ALCOVE

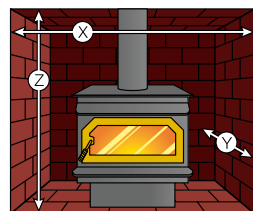
X = Minimum Width	48"	48"	44"	N/A	N/A	48"	N/A	54"	N/A	64"	56-1/2"	56-1/2"
Y = Maximum Depth	48"	48"	48"	N/A	N/A	48"	N/A	48"	N/A	48"	48"	48"
Z = Minimum Height	84"	84"	72"	N/A	N/A	72"	N/A	84"	N/A	84"	72"	72"

SIDE WALL/BACK WALL Fig. 1

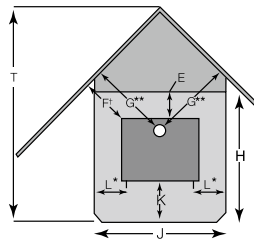


\*Measured from door opening.  
\*\*Clearances to flue are from the stove flue collar to combustibles.

ALCOVE Fig. 2



CORNER Fig. 3



F† = Measured from corner of stove heat shield.

## PRODUCTS AND DEALERS YOU CAN COUNT ON

At Lennox, we understand how important it is for you to feel comfortable at home, so we're committed to providing you with the finest hearth products available. Choosing the right dealer for your hearth needs is every bit as important as choosing the right brand, and we think you'll agree that our dealers are a big reason why you can count on getting quality customer service when you call.

### IMPORTANT NOTES:

As with any heating appliance, fireplace or stove, this appliance is extremely hot during operation. Read and understand all operating instructions before using this appliance. For further information, consult your dealer.

Actual performance may vary depending upon home design and insulation, ceiling heights, climate, condition and type of wood used, appliance location, burn rate, accessories chosen, chimney installation and how the appliance is operated.

Diagrams, illustrations and photographs are not to scale—consult installation instructions. Product designs, materials, dimensions, specifications, colors and prices are subject to change or discontinuance without notice.

# LENNOX

## HEARTH PRODUCTS

© Lennox Industries Inc. 2011  
Visit us at [www.lennox.com](http://www.lennox.com),  
or contact us at 1-800-9-LENNOX.



100% recycled