



AMERICAN HEARTH



American Hearth - The Choice for Efficiency

Jefferson Series

American Hearth – Made in America

We design every American Hearth fireplace using the best available technology and build each one to the highest-quality standards in our manufacturing facility in Belleville, Illinois.

We make most of our components – from cutting steel to forming to welding to painting – and then hand assemble each fireplace to ensure the best fit and finish. For purchased parts, we give preference to North American suppliers – including our hand-painted log sets, our tempered and ceramic glass, the paint and powder coating, and even the packaging we use to protect our products until they reach your home.

The result is a fireplace that's built to last by experienced craftsmen and craftswomen – a fireplace that's as deeply rooted in history as fire itself – American Hearth.

Jefferson Deluxe, Premium, and Select Models

- **More Sizes and Configurations Than Ever**
- **More Decorative Accessories Than Ever**
- **Louver and Flush Front Models in Matte Black**
- **Deluxe Flush Models in Stainless Steel**
- **Refractory, Ceramic Fiber, and Metal Liners**
- **Accepts Any Certified Vent-Free Burner and Log Set**
- **Zero Clearance Certified**
- **Made in the U.S.A.**

The Jefferson Vent-Free Fireboxes now offer more sizes and configurations than ever.

Available in louvered and flush front, the Jefferson Deluxe and the deeper Premium models present the updated look of a traditional recirculating firebox.



Jefferson 32 Premium in Standard Corner Cabinet Mantel (shown in Cherry) with Stainless Steel Slat Louvers, Decorative Frame, Arched Doors, Hood and Outer Frame.

Designed for installation in tight spaces, Jefferson **Deluxe** fireboxes measure just 17 7/16 inches deep for the 32-inch model and 19 13/16 for the 36- and 42-inch models, yet still allow installation of a blower. We offer an assortment of decorative arched doors, louvers, and frames for the Deluxe fireboxes – accessories normally reserved for a manufacturer's upscale models. Liners include four styles in ceramic fiber, one in refractory, or choose Stainless Steel or Black Reflective for a bold contemporary look (Deluxe only). Surround your fireplace with a traditional-style Cabinet or Corner mantel in one of five finishes, or choose stainable oak or hardwood.

Jefferson Series

For use with contemporary burners, we also offer stainless steel and reflective black liners to fit the Deluxe firebox, along with special contemporary mantels in modern matte black or matte white – in cabinet or corner models.

Jefferson **Premium** fireboxes add a little more overall depth – 21 7/16 inches – and a taller opening to showcase today's bigger log sets. Complete the Premium Firebox with one of four ceramic fiber liners, decorative accessories in three styles and four finishes, a blower – and even a lighting kit for use with a switch or dimmer control. Surround the installation with a traditional cabinet or corner mantel.

Our unique Jefferson **Select** vent-free gas firebox features a tall, deep stage for the log set, yet has compact outer dimensions and a low-profile top and bottom. The visual effect is a lot more fireplace with less of the firebox face showing.

The Jefferson Select has no lower louvers, allowing it to be installed at floor level, yet still provide the benefit of a recirculating firebox with optional blower.

The low floor height allows installation at or near floor level, for a natural, integrated look that creates the illusion of a site-built fireplace – at a fraction of the cost.

All our fireboxes feature hem-bent seams that provide a better seal while eliminating dozens of screws and fasteners. The result is a lighter, more rigid box that's easier to install.



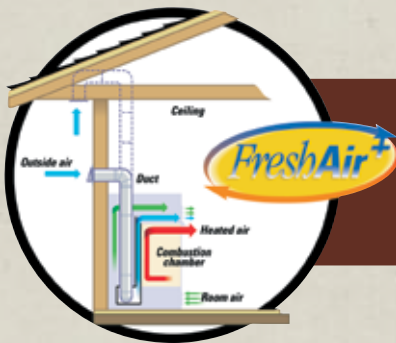
Jefferson Deluxe 32 Vent-Free Flush Firebox with Refractory Liner. Available in Black or Stainless Steel. Shown in Black.



Jefferson Premium 36 Vent-Free Louvered Firebox with Traditional Liner



Jefferson Select 42 Vent-Free Firebox with Herringbone Liner



The optional FreshAir+ System, for Deluxe and Premium Fireboxes only, blends warmed air with incoming outside air to continuously freshen your indoor air.

Options & Accessories

Options & Accessories

More than 200 easily installed decorative accessories for the Jefferson let you tailor your firebox to your décor.

Choose louvers in four patterns – slat, arched, leaf, and mission – finished in matte black, hammered pewter, or brushed stainless steel.

Matching door sets and frames complete the transformation from an attractive fireplace to a stunning focal point.

Liners

Our brick liners give your new firebox the look of a real masonry fireplace. Liner availability varies by firebox.

Blowers and Lighting

The optional automatic blower circulates the warm air throughout the room, and the optional variable-speed control lets you adjust the fan speed.

An optional Accent Lighting Kit (LK3) for Premium and Select models creates dramatic shadows inside the firebox to provide visual interest, even when no fire is burning.

Outer Frames and Bottom Trim

Our metal three-piece outer frames let you transition from your fireplace to any adjoining surface – wooden mantel, tile, stone, or any noncombustible material. Choose from steel frames – with traditional crisp lines – or our extruded aluminum frames – with a profile that combines gentle concaves with flat surfaces. Each is available in matte black, hammered pewter, and stainless steel finish.

The available bottom trim completes the fourth side of the color frame.

Extruded Aluminum Frames



Matte Black
(On Cherry Mantel)



Hammered Pewter
(On Oak Mantel)



Stainless Steel
(On White Mantel)



Jefferson Deluxe 36 Flush Firebox trimmed in Matte Black Outer Frame with Ceramic Fiber Canyon Log Set and Stacked Fieldstone Liner in Nutmeg Standard Cabinet Mantel.

D = Deluxe, P = Premium, S = Select



Traditional Brick
Burnt umber bricks with light mortar in running bond courses
(Ceramic Fiber) **D,P**



Aged Brick
Brown bricks with charcoal mortar in running bond courses with smoked accents
(Ceramic Fiber) **D,P**



Banded Brick
Dark “creamed coffee” bricks with charcoal mortar in running bond courses, plus an accent band of diagonal bricks.
(Ceramic Fiber) **D,P,S**



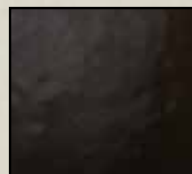
Stacked Fieldstone
Stones of various depths and colors in a hand-laid pattern with dark charcoal mortar
(Ceramic Fiber) **D,P,S**



Herringbone Brick
Burnt umber bricks stacked in a herringbone pattern with light mortar
(Ceramic Fiber) **S**



Refractory Brick
Gray bricks and mortar cleanly stacked in close, running bond courses.
(Refractory Concrete, Factory Installed only) **D**



Black Reflective
Polished black metal panels reflect flames to create extra depth.
(Metal) **D**



Brushed Stainless
Stainless Steel panels reflect flames.
(Metal) **D**

Options & Accessories



Jefferson Deluxe 32 Firebox trimmed in Stainless Steel Mission Door, Mission Louvers, Hood and Outer Frame, in Cherry Corner Standard Mantel.

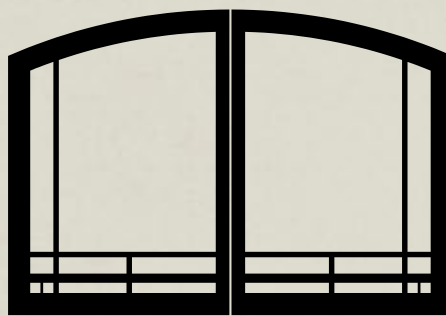


Jefferson Deluxe 36 Flush Firebox trimmed in Matte Black Outer Frame with Loft Series Vent-Free Burner, Reflective Black Decorative Top, and Polished Black Liner, in Black Contemporary Cabinet Mantel

Decorative Doors – include handles, screens, and hinges



Decorative Door Plain Arch



Decorative Door Mission Arch



Decorative Door Leaf Arch

Decorative Frames



Decorative Door Frame Arch

Decorative Louvers



Decorative Louver Arch



Decorative Louver Leaf



Decorative Louver Mission

Jefferson Decorative Trim is available in Classic Matte Black, Modern Stainless Steel, and Rich Hammered Pewter

Log Sets & Burners



Ceramic Fiber Liberty Log Set (LX-24LF) with Harmony Burner System with Expanded Ember Bed (VFXI-24)



Refractory Revolution Log Set (LX-24VR) with Harmony Burner System (VFNR-24) and Decorative Cast Grate



Refractory Williamsburg Log Set (ALS-24CR2) with Slope Glaze Burner System (VFSR-24)



Ceramic Fiber Savannah Log Set (ALS-24F2) with Slope Glaze Burner System (VFSR-24)



Ceramic Fiber Monticello Log Set (ALS-24MN) with Slope Glaze Burner System (VFSR-24)



Refractory Saratoga Log Set (ALS-24SG) with Slope Glaze Burner System (VFSR-24)



Refractory Yorktown Log Set (ALS-24YK) with Slope Glaze Burner System (VFSR-24)



Refractory Charleston Log Set (ALS-24CR1) with Slope Glaze Burner System (VFSR-24)



Refractory Charleston Select Log Set (ALS-24CR15) with Slope Glaze Burner System (VFSR-24)



Ceramic Fiber Trenton Log Set and Contour Burner Combination (AVFDR-24LB)



Refractory Concord Log Set and Contour Burner Combination (AVFDM-24LBW)



Loft Series Contemporary Burner (VFRL-24) shown with Reflective Black Decorative Top (DT24-PB)

Log Sets and Burners

The hand-painted ceramic fiber or refractory log sets complement the flames from any of our Vented/Vent-Free burners.

At 99.9 percent efficient, our Vent-Free burners deliver more heat for your energy dollars.

Step up to a Remote-Ready Burner and select our battery operated Thermostat Remote Control. Our Thermostat Remote automatically cycles the burner on and off to maintain your ideal room temperature.

Most burners are also available with manual controls or with millivolt controls that can connect to a simple wall switch, one of our wall thermostats, or a remote control. There's even a wireless wall thermostat that simplifies installation.

See the American Hearth Gas Log Brochure for complete specifications.

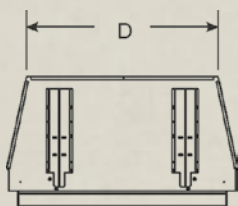
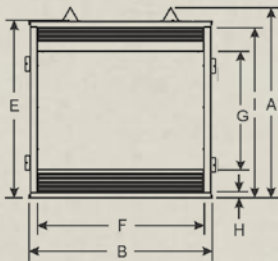
Firebox Specifications

Jefferson Firebox Specifications

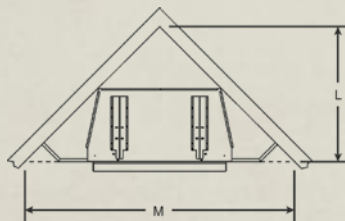
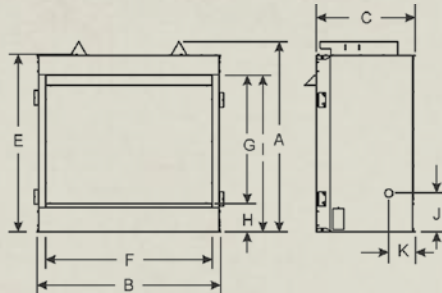
Model	A	B	C	D	E	F	G	H	I	J	K	L	M
Louvered Models													
VFD32FB	35 5/8	34 1/2	17 7/16	29	33	31	22 1/4	1 1/4	31 1/2	8 3/8	5 5/8	31 13/16	63 3/8
VFD36FB	37 5/8	39 1/2	19 13/16	33	35	36	24 1/4	1 1/4	33 1/2	8 3/8	5 5/8	36 3/16	72 3/8
VFD42FB	37 5/8	43 1/2	19 13/16	37	35	40	24 1/4	1 1/4	33 1/2	8 3/8	5 5/8	38 3/16	76 3/8
VFP32FB	41 1/8	34 1/2	21 7/16	27 1/4	38 1/2	31	27 11/16	1 1/4	37	8 3/8	5 5/8	35	69 15/16
VFP36FB	41 1/8	39 1/2	21 7/16	32 1/4	38 1/2	36	27 11/16	1 1/4	37	8 3/8	5 5/8	37 1/2	74 13/16
VFP42FB	41 1/8	43 1/2	21 7/16	36 1/4	38 1/2	40	27 11/16	1 1/4	37	8 3/8	5 5/8	39 1/2	78 15/16
Flush Models													
VFD32FB*	35 5/8	34 1/2	17 7/16	29	33	31	22 1/4	6 1/8	28 7/16	8 1/4	5 5/8	31 13/16	63 3/8
VFD36FB*	37 5/8	39 1/2	19 13/16	33	35	36	24 1/4	6 1/8	30 7/16	8 3/8	5 5/8	36 3/16	72 3/8
VFD42FB*	37 5/8	43 1/2	19 13/16	37	35	40	24 1/4	6 1/8	30 7/16	8 3/8	5 5/8	38 3/16	76 3/8
VFP32FB	41 1/8	34 1/2	21 7/16	27 1/4	38 1/2	31	27 13/16	6 1/8	34	8 3/8	5 5/8	35	69 15/16
VFP36FB	41 1/8	39 1/2	21 7/16	32 1/4	38 1/2	36	27 13/16	6 1/8	34	8 3/8	5 5/8	37 1/2	74 13/16
VFP42FB	41 1/8	43 1/2	21 7/16	36 1/4	38 1/2	40	27 13/16	6 1/8	34	8 3/8	5 5/8	39 1/2	78 15/16
VFS32FB	41 1/8	34 1/2	23 7/16	26 3/8	38 1/2	31	31 3/4	2 1/8	34	4 1/4	7 5/8	36 1/2	73 1/16
VFS36FB	41 1/8	39 1/2	23 7/16	31 3/8	38 1/2	36	31 3/4	2 1/8	34	4 1/4	7 5/8	39 1/16	78 1/16
VFS42FB	41 1/8	43 1/2	23 7/16	35 3/8	38 1/2	40	31 3/4	2 1/8	34	4 1/4	7 5/8	41 1/16	82 1/16

* Available in Matte Black or Stainless Steel

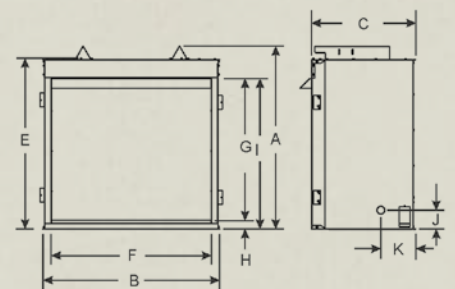
Louvered Fireboxes



Flush Fireboxes



Select Fireboxes



Jefferson Select

Jefferson Select Fireboxes feature a tall, deep hearth and low sill to create an exceptionally attractive stage for your Vent-Free burner and log set. Shown with Banded Brick Liner, Monticello log set on a Slope Glaze Burner and LK3 Lighting Kit (available for Premium and Select Models only).



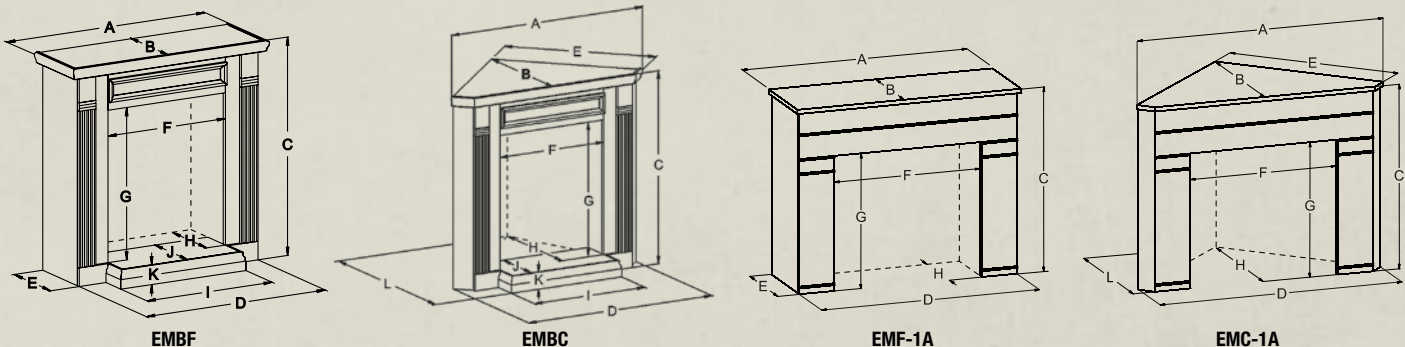
Jefferson Firebox Framing Dimensions

Model	Framing Height	Framing Width	Framing Depth	Warranty
VFD32FB	36 1/8	35	17	All Vent-Free parts carry a 5-year limited warranty.
VFP32FB	41 5/8	35	21	
VFS32FB	41 5/8	35	23	
VFD36FB	38 1/8	40	19 3/8	
VFP36FB	41 5/8	40	21	
VFS36FB	41 5/8	40	23	
VFD42FB	38 1/8	44	19 3/8	
VFP42FB	41 5/8	44	21	
VFS42FB	41 5/8	44	23	

Jefferson Mantel Specifications

Model	A Top Width	B Top Depth	C Height	D Cabinet Width	E Cabinet Depth	F Opening Width	G Opening Height	H Inside Depth	I Base Width	J Base Depth	K Base Height	L Corner Depth	Fits
EMBF-1S	56 3/4	22 1/4	51 3/8	49	19 1/8	34 1/2	33 3/4	18 1/2	38 1/2	22 1/2	3 1/4	-	Deluxe 32
EMBF-3S	62 3/4	25 3/4	53 3/8	55	22 5/8	40 1/2	35 3/4	22	44 1/2	22 1/2	3 1/4	-	Deluxe 36
EMBF-4S	66 3/4	25 3/4	53 3/8	59	22 5/8	44 1/2	35 3/4	22	48 1/2	22 1/2	3 1/4	-	Deluxe 42
EMBF-5S	56 3/4	27 3/4	56 5/8	49	22 5/8	34 1/2	39	24	38 1/2	22 1/2	3 1/4	-	Premium/Select 32
EMBF-6S	62 3/4	27 3/4	56 5/8	55	22 5/8	40 1/2	39	24	44 1/2	22 1/2	3 1/4	-	Premium/Select 36
EMBF-7S	66 3/4	27 3/4	56 5/8	59	22 5/8	44 1/2	39	24	48 1/2	22 1/2	3 1/4	-	Premium/Select 42
EMF-1A-32	54 5/8	19 3/8	46 3/4	54	19	35	33 1/2	19	-	-	-	-	Deluxe 32
EMF-1A-36	59 5/8	20 3/4	48 3/4	59	20 1/2	40	35 1/2	20 1/2	-	-	-	-	Deluxe 36
EMBC-1S	63	37 1/4	51 3/8	57 3/4	44 1/2	34 1/2	33 3/4	33 1/2	38 1/2	20 3/4	3 1/4	40	Deluxe 32
EMBC-3S	69	40 1/4	53 3/8	63 3/4	48 3/4	40 1/2	35 3/4	36 1/2	44 1/2	20 3/4	3 1/4	43	Deluxe 36
EMBC-4S	73	42 1/4	53 3/8	67 3/4	51 5/8	44 1/2	35 3/4	38 1/2	48 1/2	20 3/4	3 1/4	45	Deluxe 42
EMBC-5S	66 3/8	40 3/4	56 5/8	61 1/4	47	34 1/2	39	37	38 1/2	20 3/4	3 1/4	43 5/8	Premium/Select 32
EMBC-6S	72 3/8	43 3/4	56 5/8	67 1/4	51 1/4	40 1/2	39	40	44 1/2	20 3/4	3 1/4	46 5/8	Premium/Select 36
EMBC-7S	76 3/8	45 3/4	56 5/8	71 1/4	54 1/8	44 1/2	39	42	48 1/2	20 3/4	3 1/4	48 5/8	Premium/Select 42
EMC-1A-32	61 1/2	34 3/8	46 3/4	61	43 1/2	35	33 1/2	34	-	-	-	-	Deluxe 32
EMC-1A-36	66 1/2	36 7/8	48 3/4	66	47	40	35 1/2	36 1/2	-	-	-	-	Deluxe 36

Standard Mantels available in cherry, dark oak, oak, nutmeg, white, unfinished hardwood, and unfinished oak.
Contemporary Mantel available in Black or White.



Vent-Free appliances may be installed in an aftermarket (mobile) home where not prohibited by state or local codes. The approval (G1-0504-90B) has been granted subject to the installation in compliance with CMR 248, 527 CMR 30, Massachusetts State Plumbing Code and/or the Massachusetts Fuel Gas Code.

Member of the following industry associations:

This appliance is design-certified to the ANSI standard by:



Empire is committed to continuous product improvement; specifications are subject to change without notice. Dimensions in this brochure are approximate; read and follow the framing dimensions in the owners manual supplied with your Empire product. Flame size, shape, and color will vary from photos. Our mantels feature natural veneers and hand-rubbed finishes - wood grain and color will vary. Adjust light levels and use "natural light" incandescent bulbs to enhance the dramatic look for your wooden mantel.



918 Freeburg Ave.
Belleville, IL 62220-2623
e-mail: info@empirecomfort.com

AH-00828 4/17/12