



DAKA 622FBT

Standard features

- 7.30 cu. ft. firebox
- 25" log capacity
- Full length ash pan
- Dayton 550-cfm blower (2)
- Cold air filter box
- Maximum output 125,000 BTU/hr
- 5 year firebox warranty
- Forced draft control

Benefits

- Provides up to 10 hours burn time
- Heats 1,500 to 3,000 sq. ft.
- Designed to heat the whole house

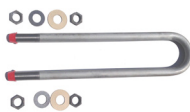


ADD-ON/CENTRAL WOOD FURNACE

With a maximum output of 125,000 BTU this large unit will heat up to 3,000 sq ft. A forced draft air blower on the front of the furnace is automatically controlled by a wall-mounted room thermostat located in the central living area of the house. This allows the heat output to be controlled automatically from an upstairs thermostat and ensures quick heat recovery and good draft along with consistent even heat control.

ACCESSORIES

DOMESTIC HOT WATER PREHEATER



- Designed to heat your homes tap water from the heat of the fire in the furnace. U shape stainless steel boiler pipe connects to present domestic hot water tank to provide gallons of piping hot water.

SOFT COAL SHAKER GRATE KIT



- Multi piece grate with push pull handle replaces the fixed wood burning grate to permit burning of bituminous and sub-bituminous coal. Works with DAKA furnace Models 521FB, 621FB and 622FBT.

BAROMETRIC DRAFT REGULATOR 6"



- Installs in chimney connector to help provide constant draft control, extend burn times, save fuel, avoid over-firing, and reduce creosote formation.

LARGE



622FBT WOOD STOVE

LARGE

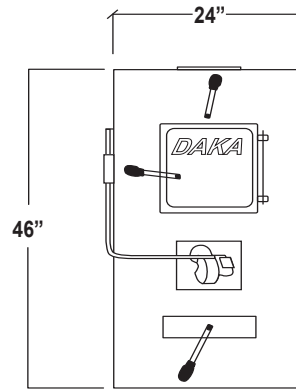
Firebox	7.3 cu. ft.
Log length	25"
BTU/hr (output)	Up to 125,000
Heating area	1,500 to 3,000 sq. ft.
Burn time	Up to 10 hours
Emissions	EPA Exempt
Ash pan	Included - full length scoop style
Flue pipe diameter	6"
Heavy-gauge plate steel firebox	3/16" / 7 gauge
Baffle	3/16" / 7 gauge sliding plate
Size W x H x D	24" x 48" x 45 1/2" with filter box
Stove weight / shipping weight	522 lb / 575 lb
Mobile home approved	No
Fresh air intake kit	N/A
Made in	USA
Approvals [†]	USA [‡]
Safety tested to:	UL Standard 391-2010



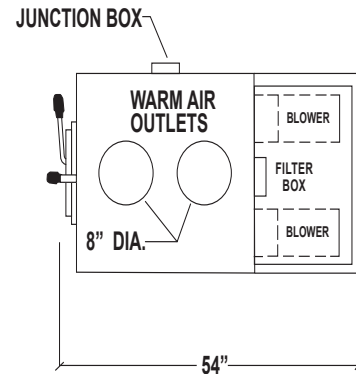
WARRANTY (REFER TO MANUAL OR ONLINE AT www.dakacorp.com FOR DETAILS)

DESCRIPTION	PARTS	LABOR
Combustion chamber warranty* - material and workmanship	5 YEARS	5 YEARS
Cast iron components Cast iron grate, cast iron firedoor	1 YEAR	1 YEAR
Standard electrical components	1 YEAR	1 YEAR
Gaskets, draft controls	1 YEAR	1 YEAR
Firebrick	N/A	N/A

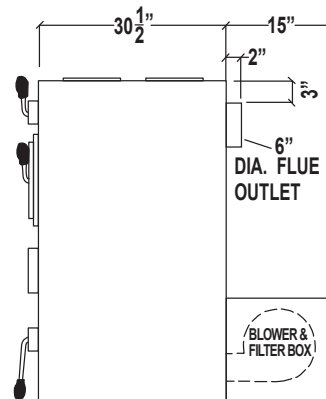
FRONT VIEW DIMENSIONS



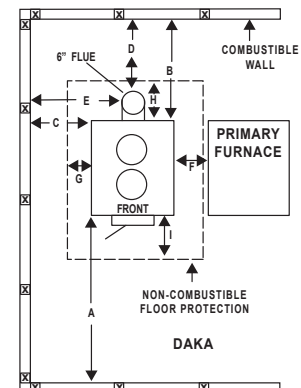
TOP VIEW



SIDE VIEW DIMENSIONS



CLEARANCES TO COMBUSTIBLES
FLOOR PROTECTION



CLEARANCES TO COMBUSTIBLES

SINGLE WALL PIPE

A	B	C
48"	32 1/2"	18"
D	E	F
23"	27"	9"

FLOOR PROTECTION*

G	8"
H	11 1/2"
I	16"

*Steel with a minimum thickness of 0.015" (0.38 mm) or ceramic tiles sealed together with grout. No protection is required if the unit is installed on a non-combustible floor (ex: concrete).

** Floor protection required under the horizontal section (H₀) of pipe connector. Must exceed each side of pipe by at least 2 inches (51 mm).

[†]Always check with and follow local codes. [‡]See written warranty available online @Dakacorp. for details