



## DAKA 621

### Standard features

- 7.30 cu. ft. firebox
- 25" log capacity
- Full length ash pan
- Dayton 550-cfm blower (1)
- Cold air filter box
- Maximum output 125,000 BTU/hr
- 5 year firebox warranty

### Benefits

- Provides up to 10 hours burn time
- Heats 1,500 to 3,000 sq. ft.
- Designed to heat the whole house

LARGE

## ADD-ON/CENTRAL WOOD FURNACE

With a maximum output of 125,000 BTU this large unit will heat up to 3,000 sq ft. Constructed of heavy-duty 3/16" (7 gauge) thick steel plate this furnace is designed for years of trouble free service. The heat output is controlled by a non-electrical automatic damper control located on the front of the furnace. This reliable damper features a heat-sensitive bimetallic coil spring that regulates the air supply to the fire, thus controlling the burn rate and heat input. Install as an indoor add-on furnace or a central furnace to heat your whole house.

## ACCESSORIES

### TWIN BLOWER KIT



- Increase the air flow by adding a second blower to the back of your DAKA furnace. Kit includes: One 550-CFM Blower with motor, wiring hardware and installation manual.

### DUAL FILTER BOX



- Upgrade to this large cold air return filter box when adding the optional #273 Twin Blower Kit. Designed to cover two blowers. Requires one 14" x 25" x 1" paper furnace filter (not included)

### FORCED DRAFT KIT



- Add the convenience of a wall thermostat to control heat output. Improves fire starting, increases chimney draft. Includes draft blower, wall thermostat, transformer/relay, controls, wiring and instruction manual.



## 621 WOOD STOVE

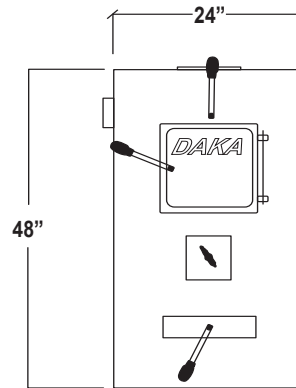
Firebox	7.3 cu. ft.
Log length	25"
BTU/hr (output)	Up to 125,000
Heating area	1,500 to 3,000 sq. ft.
Burn time	Up to 10 hours
Emissions	EPA Exempt
Ash pan	Included - full length scoop style
Flue pipe diameter	6"
Heavy-gauge plate steel firebox	3/16" / 7 gauge
Baffle	3/16" / 7 gauge sliding plate
Size W x H x D	24" x 48" x 45 1/2" with filter box
Stove weight / shipping weight	503 lb / 553 lb
Mobile home approved	No
Fresh air intake kit	N/A
Made in	USA
Approvals*	USA*
Safety tested to:	UL Standard 391-2010



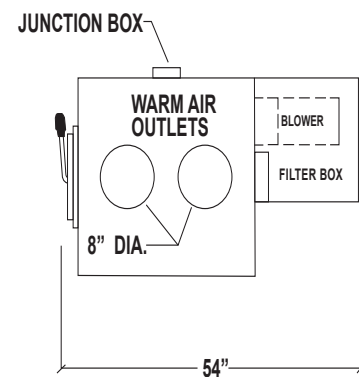
**WARRANTY** (REFER TO MANUAL OR ONLINE AT [www.dakacorp.com](http://www.dakacorp.com) FOR DETAILS)

DESCRIPTION	PARTS	LABOR
Combustion chamber warranty* - material and workmanship	5 YEARS	5 YEARS
Cast iron components Cast iron grate, cast iron firedoor	1 YEAR	1 YEAR
Standard electrical components	1 YEAR	1 YEAR
Gaskets, draft controls	1 YEAR	1 YEAR
Firebrick	N/A	N/A

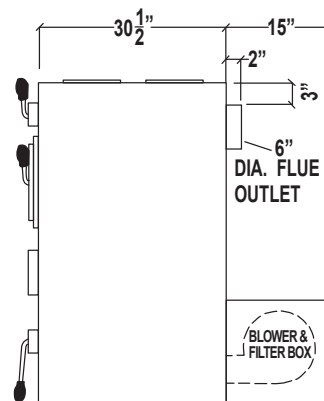
FRONT VIEW DIMENSIONS



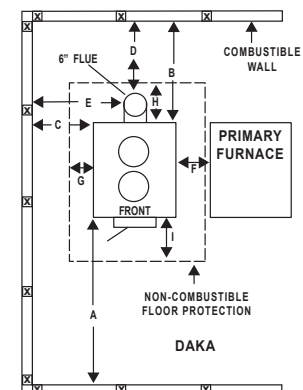
TOP VIEW



SIDE VIEW DIMENSIONS



CLEARANCES TO COMBUSTIBLES  
FLOOR PROTECTION



### CLEARANCES TO COMBUSTIBLES

#### SINGLE WALL PIPE

A	B	C
48"	32 1/2"	18"
D	E	F
23"	27"	9"

#### FLOOR PROTECTION\*

G	8"
H	11 1/2"
I	16"

\*Steel with a minimum thickness of 0.015" (0.38 mm) or ceramic tiles sealed together with grout. No protection is required if the unit is installed on a non-combustible floor (ex: concrete).

\*\* Floor protection required under the horizontal section (Ho) of pipe connector. Must exceed each side of pipe by at least 2 inches (51 mm).

\*Always check with and follow local codes. \* See written warranty available online @Dakacorp. for details

S-07-14-01-S1-19