

WM-FM & WM-FML

LINEAR ELECTRIC FIREPLACES
INDOOR

Amantii



WM-FML-88-9623-STL

WM-FML STEEL

WALL MOUNT FLUSH MOUNT STEEL SURROUND

Sierra Flame by Amantii's Steel Linear Series featuring a deep charcoal colored steel surround. The steel surround has aesthetic proportions and features a touch pad with a numerical temperature display. Heat is emitted through the face below the glass viewing area allowing for a flush mount installation. If recessing is not an option, this model is also wall mountable and perfect in apartments of in places where renovation or construction is not an option.

Available in 6 sizes, you'll find a unit that is perfect for any space in your home, business or commercial space. Boasting our FIRE & ICE® presentation with three color LED strips allowing for a multi-color flame options. With just a click of the included remote control choose from blue, rose, violet, yellow or orange colored flames. The WM-FML-STL series comes standard with clear decorative media. Further media options available for additional purchase.

KEY FEATURES

- Can be built in flush or wall mounted with included brackets. Heat is emitted from a single slot in the face of the surround.
- FIRE & ICE® Flame presentation - three light strips allow for yellow, orange, blue, violet and rose colored flames
- Stove bright charcoal metallic finished steel surround
- Touch pad with temperature display
- Latest LED light technology
- 13 colors of surround back-lighting
- Hard-wire ready
- Thermostat hard-wire ready
- Plug on left side
- Heat can operate without flame
- Single remote control for flame, surround back-lighting & heater included
- Can produce up to 5000 BTU of heat, enough to heat up to 500 sq feet

IDEAL APPLICATIONS

- Residential spaces
- Commercial spaces
- Restaurants
- New construction or renovations
- Places where construction is not an option (wall mount)

TECHNICAL SPECS

Volts	120
Amps	13
Watts	1500 max
Heater On	1500 watts high, 750 watts low
Heater Off	22 watts
Rotor Motor	1 at 5 watts
BTU	5000

WM-FM GLASS SERIES

6 sizes to choose from. Further media options available for additional purchase.

SERIES MODELS:

WM-FML-26-3223-STL
 WM-FML-34-4023-STL
 WM-FML-48-5523-STL
 WM-FML-60-6623-STL
 WM-FML-72-7823-STL
 WM-FML-88-9623-STL



WM-FML-48-5523-STL

*Height, Width, Depth: 22 1/2 x 55 x 7 1/8
 Glass Viewing Opening: 45 1/2 x 10
 **Shipping Size: 27 2/5 x 58 2/3 x 10 1/2
 Shipping Weight: 79 lbs. Glass Included



WM-FML-60-6623-STL

*Height, Width, Depth: 22 1/2 x 66 x 7 1/8
 Glass Viewing Opening: 57 1/4 x 10
 **Shipping Size: 27 2/5 x 70 4/9 x 10 1/2
 Shipping Weight: 91.50 lbs. Glass Included



WM-FML-72-7823-STL

*Height, Width, Depth: 22 1/2 x 78 x 7 1/8

Glass Viewing Area: 69 x 10

**Shipping Size: 27 2/5 x 82 1/6 x 10 1/2

Shipping Weight: 114 lbs. Glass Included



WM-FML-26-2623-STL

*Height, Width, Depth: 22 1/2 x 32 x 7 1/8

Glass Viewing Area: 23 1/2 x 10

**Shipping Size: 27 2/5 x 36 2/3 x 10 1/2

Shipping Weight: 52 lbs. Glass Included



WM-FML-34-4023-STL

*Height, Width, Depth: 22 1/2 x 40 x 7 1/8

Glass Viewing Area: 31 1/2 x 10

**Shipping Size: 27 2/5 x 44 2/3 x 10 1/2

Shipping Weight: 61 lbs. Glass Included



WM-FML-88-9623-STL

*Height, Width, Depth: 22 1/2 x 96 x 7 1/8

Glass Viewing Opening: 86 x 10

**Shipping Size: 27 2/5 x 99 1/5 x 10 1/2

Shipping Weight: 137 lbs. Glass Included

INCLUDED ACCESSORIES

Sierra Flame WM-FML Steel Series comes with clear decorative media, plus a remote.



*Remote control may not be exactly as shown

WM-FM GLASS

WALL MOUNT FLUSH MOUNT GLASS SURROUND

The Wall Mount/Flush Mount series features an exclusive Fire and Ice flame presentation. Simply wall mount or built in flush with the included brackets.

Heat is emitted from a single slot in the face of the surround. 13 colors of surround back-lighting illuminate spaces creating even more ambiance. All

Built-In Flush Mount / Wall Mount fireplaces come standard with a driftwood style log set and optional decorative media of EMBER or FIRE & ICE® media are available for purchase.

A standard surround included in the box for the WM FM series is black - White glass surrounds are available for additional purchase.

KEY FEATURES

- WiFi Compatible to connect and control the fireplace from your smartphone with the use of our app. Available on the Google Play Store and Apple App Store
- Three speed flame motor
- 5000 BTU
- No unsightly venting and grills seen. A true clean and vent free look
- Programmable timer & thermostat allows you to decide the temperature of the room. Set your fireplace to turn on before you arrive home or have it automatically turn on when the weather is cold.
- Touch pad for convenient control of the features and temperature display from the fireplace.
- Choose from combinations of yellow, orange and red colored flames
- Approved for indoor or outdoor applications. *Overhang required for outdoor applications
- Choose from 11 colors of canopy and ember bed lighting to illuminate decorative media from below and above
- Two flame pattern styles – standard and more traditional
- New patented thermostatic remote comes included

IDEAL APPLICATIONS

- Residential spaces
- Commercial spaces
- Restaurants
- New construction or renovations
- Places where construction is not an option (wall mount)

TECHNICAL SPECS

Volts	120
Amps	13
Watts	1500 max
Heater On	1500 watts high, 750 watts low
Heater Off	22 watts
Rotor Motor	1 at 5 watts
BTU	5000

INCLUDED ACCESSORIES

Amantii WM-FM Glass Front Series comes with installed log set, plus a remote.



WM-FM GLASS SERIES

7 sizes to choose from. White glass surrounds available for purchase. See page 7 for more details.

SERIES MODELS:

- WM-FM-26-3623-BG
- WM-FM-48-5823-BG
- WM-FM-72-8123-BG
- WM-FM-50-BG (does not have the surround back-light feature)
- WM-FM-34-4423-BG
- WM-FM-60-7023-BG
- WM-FM-88-10023-BG



WM-FM-48-5823-BG

Height, Width, Depth: 23 x 57 1/2 x 6 3/4
Glass Viewing Area: 45 1/2 x 10
**Shipping Size: 59 5/8 x 8 1/4 x 24 1/2
Shipping Weight: 81 lbs Glass Included



WM-FM-50-BG

Height, Width, Depth: 23 x 51 x 6 3/4
Glass Viewing Area: 45 1/2 x 10
**Shipping Size: 61 x 10 1/4 x 26 1/4
Shipping Weight: 84 lbs Glass Included
*NOTE: WM-FM-50-BG does not have the surround back-light feature.

WM-FM-60-7023-BG

*Height, Width, Depth: 23 x 69 1/4 x 6 3/4
Glass Viewing Area: 57 1/4 x 10
**Shipping Size: 71 1/2 x 8 1/4 x 24 1/2
Shipping Weight: 97 lbs. Glass Included



WM-FM-26-2623-BG

Height, Width, Depth: 23 x 35 1/2 x 6 3/4
Glass Viewing Area: 23 1/2 x 10
**Shipping Size: 38 3/4 x 9 1/8 x 25 1/4
Shipping Weight: 53 lbs Glass Included

WM-FM-34-4423-BG

*Height, Width, Depth: 23 x 43 1/2 x 6 3/4
Glass Viewing Area: 31 1/2 x 10
**Shipping Size: 47 1/4 x 9 1/8 x 25 1/4
Shipping Weight: 53 lbs Glass Included



WM-FM-72-8123-BG

*Height, Width, Depth: 23 x 81 x 6 3/4
Glass Viewing Area: 69 x 10
**Shipping Size: 83 1/4 x 8 1/4 x 24 1/2
Shipping Weight: 113 lbs Glass Included

WM-FM-88-10023-BG

*Height, Width, Depth: 23 x 100 x 6 3/4
Glass Viewing Area: 86 x 10
**Shipping Size: 102 5/8 x 8 1/4 x 24 1/2
Shipping Weight: 139 lbs Glass Included

WM-BI-2428 VLR BG

WALL MOUNT FLUSH MOUNT STEEL SURROUND

Not all spaces can accommodate a full scale fireplace, and here is where a corner fireplace shines literally and figuratively.

Tucked into even the smallest of nooks, our WM-BI-2428 VLR BG is guaranteed to render that room the most beloved centre of the household.

The WM-BI-2428 VLR BG boasts a modern, streamlined temperament, with a geometric, rather than classic sensibilities, or stay true to their more traditional counterparts.

This corner fireplace is all about complimenting your home's unique interior, be it rustic or contemporary, and your rest assured your corner fireplace will punctuate your interior taste like a personal signature. Ambiance is a timeless quality, and the WM-BI-2428-VLR BG will enhance your surroundings tenfold.

KEY FEATURES

- 2 Installation Options - Built In or Mounted Cross Corner
- Black Glass Surround with a Curved Glass Design is available for purchase
- Improved Uplights and Downlights
- Thermostat and Hardwire Ready
- Perfect for New Construction and Renovation Projects

IDEAL APPLICATIONS

- Residential spaces
- Commercial spaces
- Restaurants
- New construction or renovations

TECHNICAL SPECS

Volts	120
Amps	12.5
Watts	1500 max
Heater	1500 watts high 750 watts low
No Heater	22 watts
Lamps	LED 22 watts
Rotor Motor	1 at 5 watts
Approx.	
Heating Area	400 sq. ft.



WM-BI-2428-VLR-BG Curved Surround

*Height, Width, Depth: 28 x 24 x 9 1/8

Glass Viewing Area: 16 1/8 x 14 5/8

Glass Size: 24 x 28

**Shipping Size: 27 3/8 x 12 x 31

Shipping Weight: 61 lbs. Glass Included

FIRE GLASS

Our decorative fire glass media is a beautiful addition to your fireplace. Turn your fireplace into a expressive work of art by simply adding our decorative fire glass media. Our fire glass adds a distinctly modern feel to your gas fireplace - mix colors and textures for a unique appearance.

Our decorative fire glass is tempered and will not melt or degrade, some discoloration is normal on glass that is placed directly on the flame. Always wear protective gloves when handling fire glass media.

One 5lb container of media will cover 1 square foot.

AMSF-GLASS-01



AMSF-GLASS-02



AMSF-GLASS-03



AMSF-GLASS-04



AMSF-GLASS-05



AMSF-GLASS-06



AMSF-GLASS-07



AMSF-GLASS-08



AMSF-GLASS-09



AMSF-GLASS-10



AMSF-GLASS-11



AMSF-GLASS-12



AMSF-GLASS-13



AMSF-GLASS-14



AMSF-GLASS-15



AMSF-GLASS-16



FI-105-DIAMOND



FI-107-DIAMOND



FI-109 DIAMOND



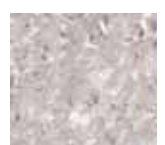
LOG SET



LRG LOG SET



CLEAR



Images are not to scale, please visit your local dealer to view the actual accessories.

Variations in the color and shade are inherent in all printing processes, the actual colors may vary slightly from those shown.

Note: Log sets and Designer Media Kits will fit in all sizes of the following models - Panorama DEEP, TRU VIEW XL and CUBE ONLY. (Depending on the size of the fireplace model, some logs may not be needed.)

DESIGNER MEDIA KITS

Add incredible value with designer media kits including deluxe log sets, glass and stone media and decorative embers.

DESIGN-MEDIA-BIRCH-10PCE



DESIGN-MEDIA-OAK-10PCE



DESIGN-MEDIA-14PCE



14-piece log



DESIGN-MEDIA-BIRCH-15PCE



15-piece Birch log



DESIGN-MEDIA-15PCE



15-piece Drift log



DESIGN-MEDIA-6PCE



6-piece log



AM-WMFM-WMFML-US

Jan 2023

Distributed By:

Images are not to scale, please visit your local dealer to view the actual accessories.

Variations in the color and shade are inherent in all printing processes, the actual colors may vary slightly from those shown.

Note: Log sets and Designer Media Kits will fit in all sizes of the following models - Panorama DEEP, TRU VIEW XL and CUBE ONLY.

(Depending on the size of the fireplace model, some logs may not be needed.)

Amantii

Visit our online showrooms at:

www.amantii.com

877-850-9458

Product updates, specifications and dimensions are subject to change. Please refer to the product manual to verify measurements and clearance requirements. All local building codes must be followed.